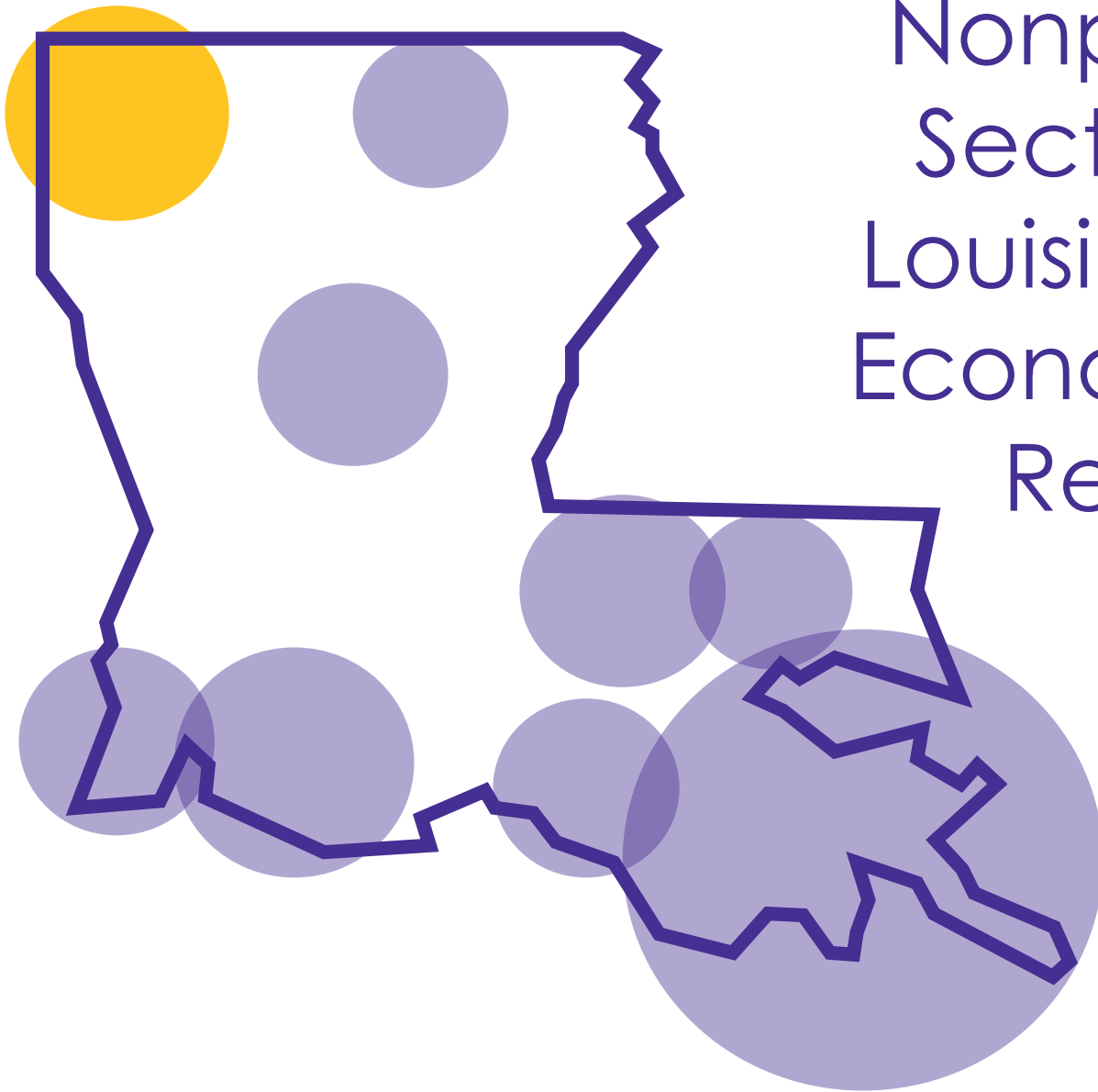


State of the Nonprofit Sector in Louisiana: Economic Report

June 2022



Dr. Heather Carpenter

Nikki Stork, CNP

Elizabeth Coontz

The authors would like to acknowledge the following individuals and organizations in contributing to this report and analysis:

- Dr. Helen Wise
- Stacey Hargis
- Leigh Chambers
- Douglas White

We would also like to thank the LSUS Foundation, Norman A. Dolch Super Professorship, Office of Continuing Education at LSUS, and the Louisiana Alliance for Nonprofits for their financial and pro-bono support of the report and State of the Nonprofit Sector in Louisiana event.

About the State of the Nonprofit Sector in Louisiana: Economic Report

The purpose of this report is to provide a picture of the economic impact of nonprofit organizations in Louisiana. This report uses IRS 2020 data and 2017 workforce data from the Bureau of Labor Statistics. The averages used in the report are 5% trimmed averages. The report begins with the state's data and is then broken down by Metropolitan Statistical Area (MSA). The following MSAs are included in this report:

1. Shreveport-Bossier
2. Alexandria
3. Houma-Thibodaux
4. Lafayette
5. Lake Charles
6. Monroe-Ruston
7. Hammond
8. Baton Rouge
9. New Orleans

To provide a picture of active organizations, the data was filtered to only include organizations that had one dollar or greater in their income and/or assets and were a 501c3. Economic findings presented in this report include income and asset distribution, and National Taxonomy of Exempt Entities (NTEE) codes, which is a classification system of nonprofit organizations. There are ten main codes used by the IRS to determine the different types of nonprofits. The workforce data includes the percentage of nonprofit employment in each industry as determined by the North American Industry Classification System (NAICS).

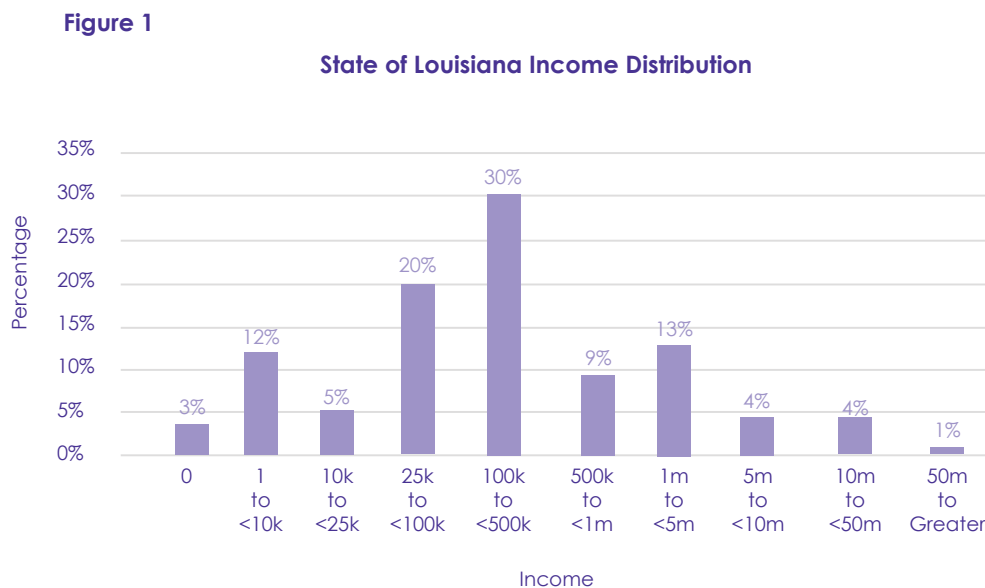
The initial dataset provided by the IRS included 21,963 registered nonprofits in the state. After cleaning the data and only including active nonprofits (nonprofits that had one dollar or greater in their income and/or assets). The total number of operating nonprofits in the state are 7,028, with 5,311 being 501c3 charitable nonprofits.

While other 501c organizations do not have to pay income taxes, these organizations offer varying levels of tax deduction available to donors. People are most familiar with 501c3s, which are included in this report.

State of Louisiana Nonprofit Income

Of the 5,311 501c3 nonprofit organizations in the state, the majority (67%) operate with an income that falls between the range of \$1 and \$499,999. As a whole, all 5,311 501c3 nonprofit income amounts range from a minimum of \$0 to a maximum of \$4,114,959,884. The organization with the largest income is Ochsner Clinic Foundation, located in New Orleans, LA. The average income for Louisiana's nonprofits is \$727,657. The median income amount is \$155,068.

Figure 1 illustrates the income distribution of 501c3 nonprofits across Louisiana.



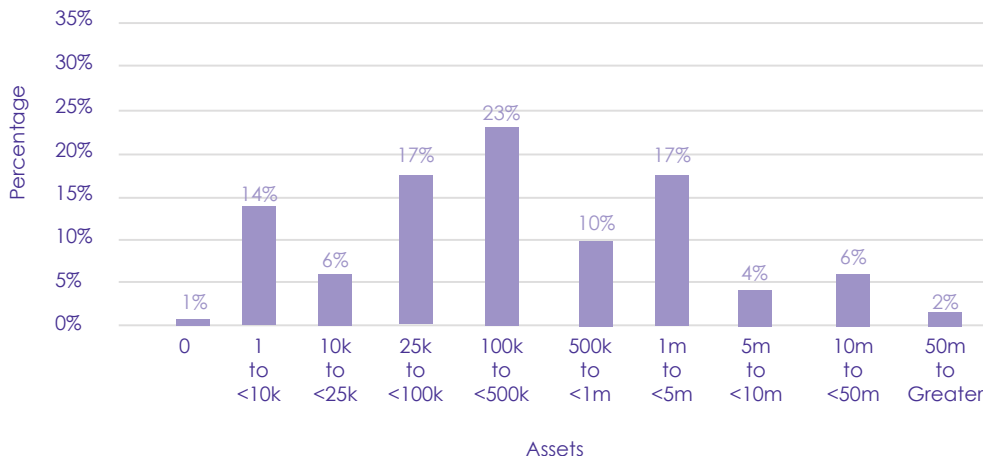
State of Louisiana Nonprofit Assets

The majority of 501c3 nonprofits (70%) operate with assets that fall between the range of \$1 and \$999,999. The total asset amounts range from a minimum of \$0 to a maximum of \$3,490,558,630. The organization with the largest assets is Ochsner Clinic Foundation, located in New Orleans, LA. The average asset amount for Louisiana's nonprofits is \$1,249,361. The median asset amount is \$233,687.

Figure 2 illustrates the asset distribution of nonprofits across the State of Louisiana.

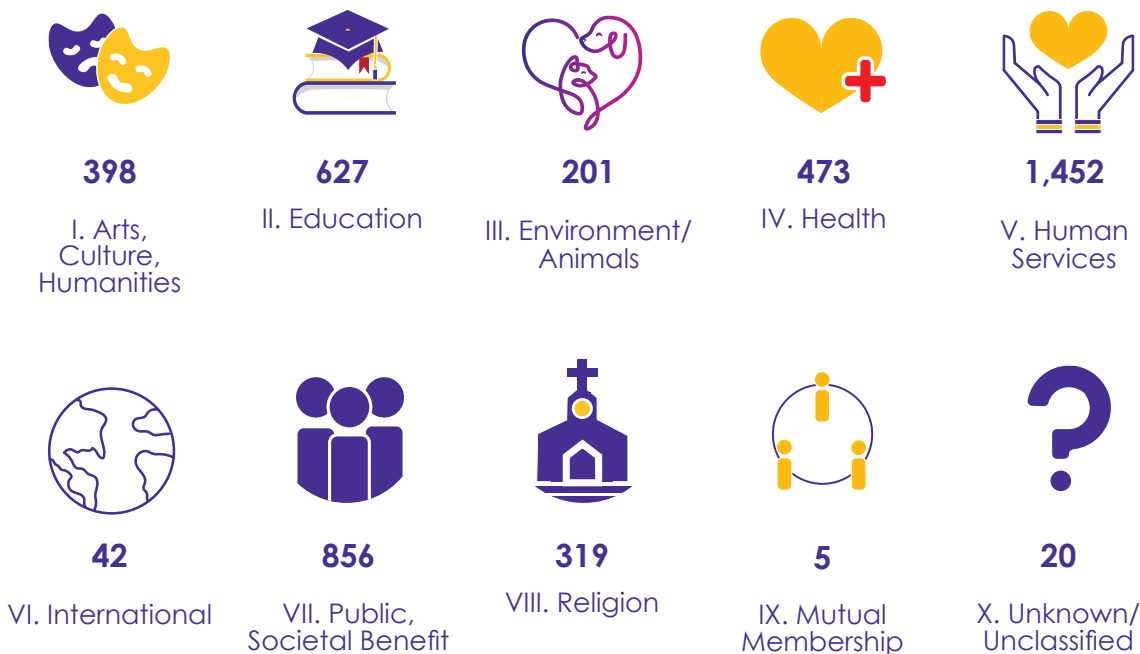
Figure 2

State of Louisiana Asset Distribution



State of Louisiana NTEE Codes

The most common NTEE codes (types of nonprofits) in the state of Louisiana are Human Services (1,452), Public/Societal Benefit (856), and Education (627). The fewest NTEE codes are Mutual Membership (5) and Unknown/Unclassified (20). The data set had 918 organizations that did not list an NTEE code.

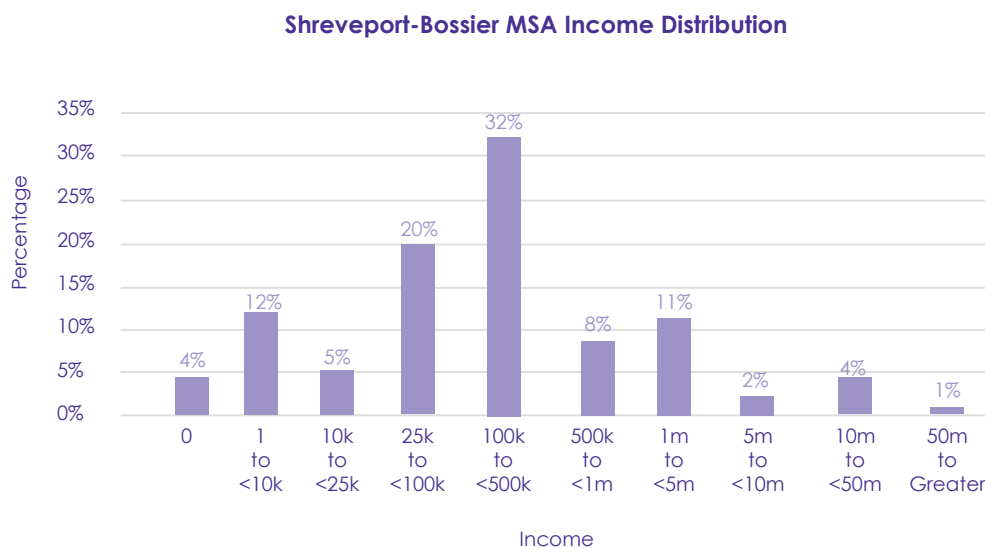


Shreveport-Bossier MSA Nonprofit Income

Of the 2,135 registered nonprofits in the Shreveport-Bossier MSA, 519 are active 501c3 nonprofits, the majority operate with income between \$1 and \$499,999 (69%). The income amounts for all 2,135 501c3 nonprofits range from a minimum of \$0 to a maximum of \$793,255,516. The organization with the largest income is Ochsner LSU Health System of North Louisiana, located in Shreveport, LA. The average income for the nonprofits in the Shreveport-Bossier MSA is \$576,438. The median income is \$135,273.

Figure 3 illustrates the income distribution of nonprofits across the Shreveport-Bossier MSA.

Figure 3



Shreveport-Bossier MSA Nonprofit Assets

The majority of Shreveport-Bossier MSA 501c3 nonprofits (75%) operate with assets that fall between the range of \$1 and \$999,999. The total asset amounts range from a minimum of \$0 to a maximum of \$334,299,199. The organization with the largest assets is Ochsner Health System of North Louisiana, located in Shreveport, LA. The average asset amount for nonprofits in the Shreveport-Bossier MSA is \$1,089,122. The median asset amount is \$218,543.

Figure 4 illustrates the asset distribution of nonprofits across the Shreveport-Bossier MSA.

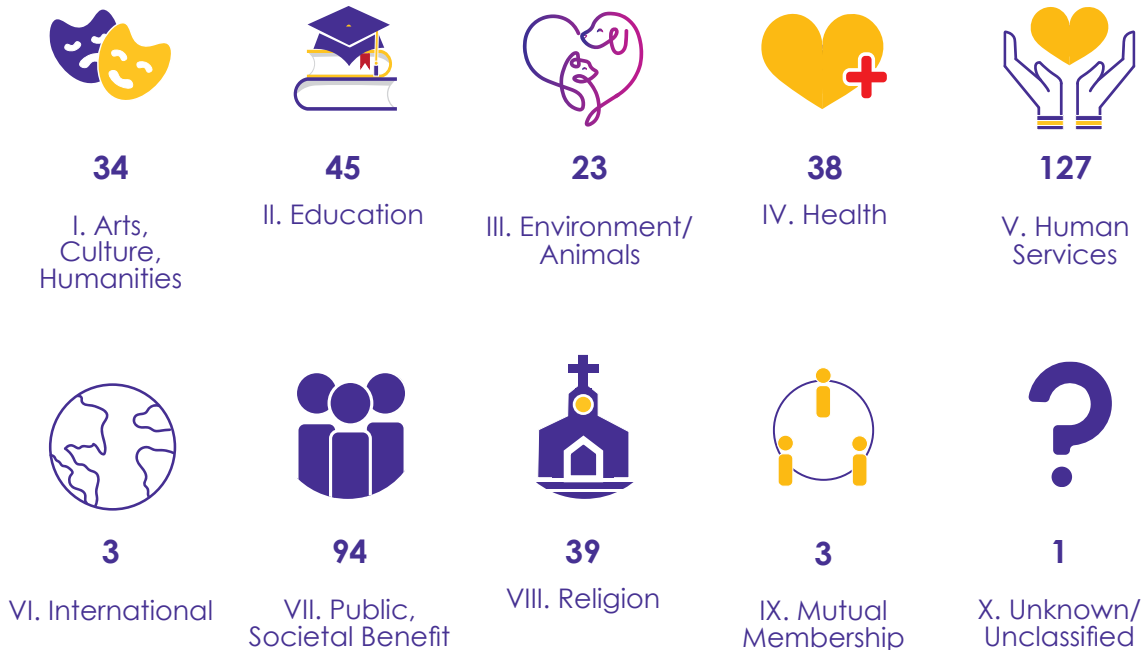
Figure 4

Shreveport-Bossier MSA Asset Distribution



Shreveport-Bossier MSA NTEE Codes

The most common NTEE codes (types of nonprofits) in the Shreveport-Bossier MSA are Human Services (127), Public/Societal Benefit (94), and Education (45). The fewest NTEE codes were International (3), Mutual Membership (3), and Unknown/Unclassified (1). The data set had 112 organizations that did not list an NTEE code.

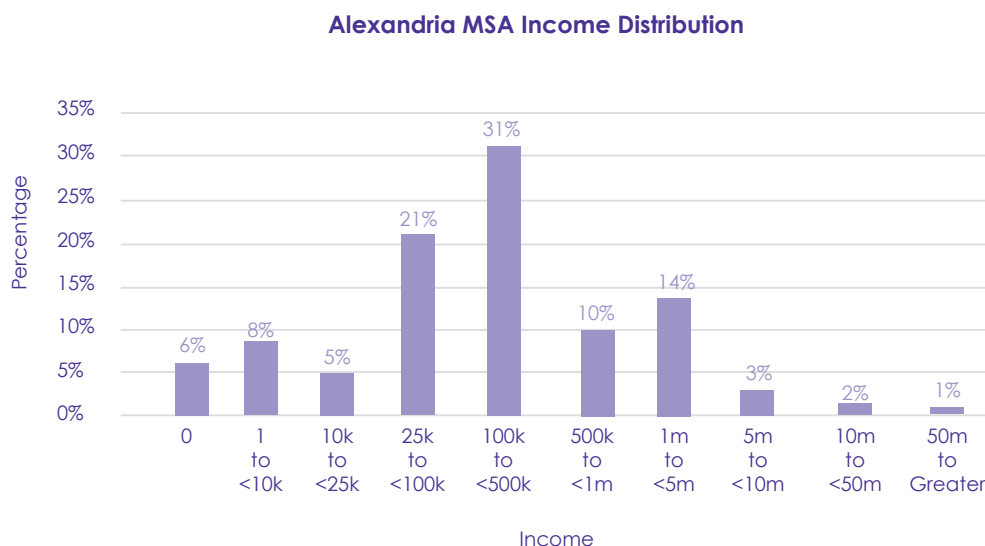


Alexandria MSA Nonprofit Income

Of the 176 501c3 organizations in the Alexandria MSA, the majority (65%) operate with an income that falls between the range of \$1 and \$499,999. Between all 176 501c3 organizations, their income amounts range from a minimum of \$0 to a maximum of \$308,807,114. The organization with the largest income is Christus Health Central Louisiana, located in Alexandria, LA. The average income for the Alexandria MSA's nonprofits is \$609,075. The median income amount is \$161,866.

Figure 5 illustrates the income distribution of nonprofits across the Alexandria MSA.

Figure 5

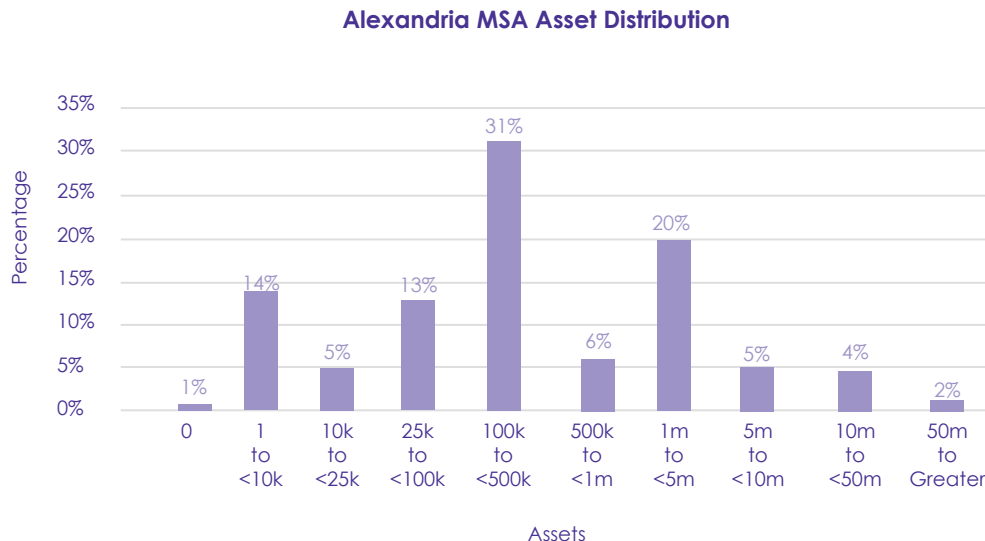


Alexandria MSA Nonprofit Assets

The majority of Alexandria MSA 501c3 nonprofits (69%) operate with assets that fall between the range of \$1 and \$999,999. The asset amounts range from a minimum of \$0 to a maximum of \$331,600,505. The organization with the largest assets is Rapides Foundation, located in Alexandria, LA. The average asset amount for the Alexandria MSA's nonprofits is \$1,044,028. The median asset amount is \$265,825.

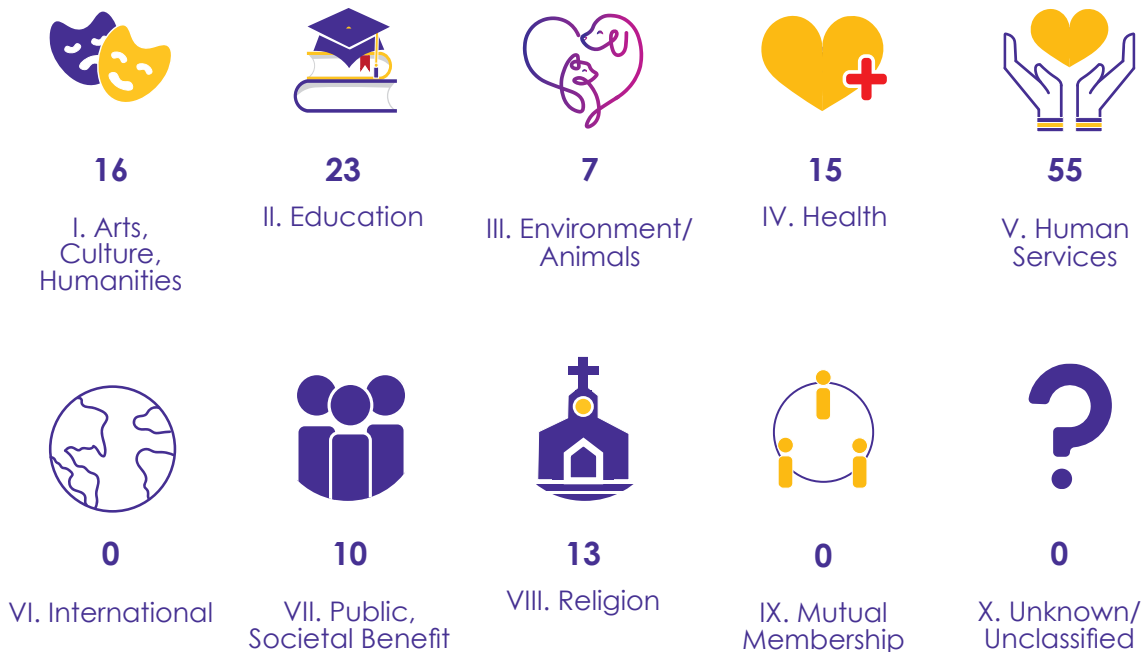
Figure 6 illustrates the asset distribution of nonprofits across the Alexandria MSA.

Figure 6



Alexandria MSA NTEE Codes

The most common NTEE codes (types of nonprofits) in the Alexandria MSA are Human Services (55) and Education (23). The fewest categories of organizations are International (0), Mutual Membership (0), and Unknown/Unclassified (0). The data set had 37 organizations that did not list an NTEE code.

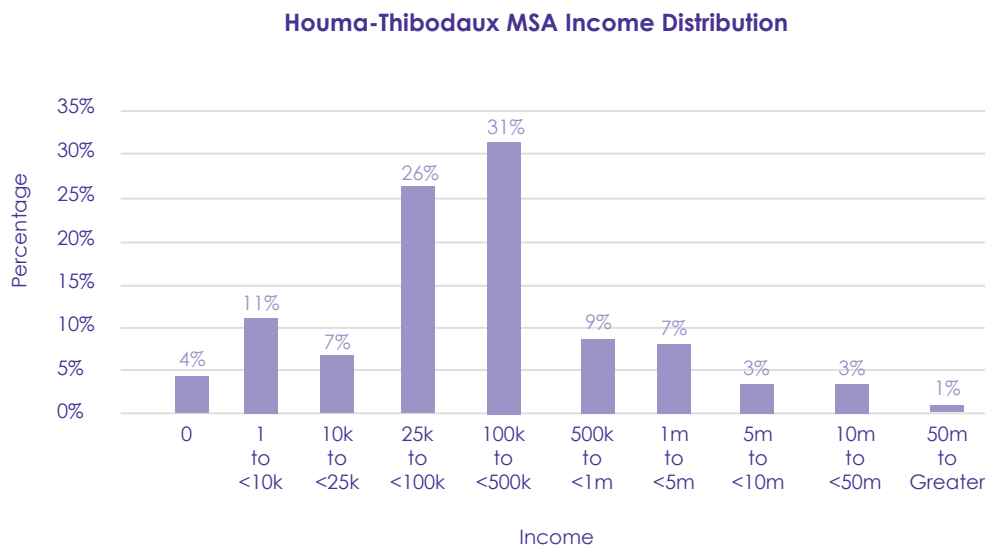


Houma-Thibodaux MSA Nonprofit Income

Of the 195 501c3 nonprofit organizations in the Houma-Thibodaux MSA, the majority (75%) operate with an income that falls between the range of \$1 and \$499,999. For all 195 501c3 organizations, their income amounts range from a minimum of \$0 to a maximum of \$272,489,003. The organization with the largest income is Thibodaux Regional Health System, Inc, located in Thibodaux, LA. The average income for the Houma-Thibodaux MSA's nonprofits is \$388,749. The median income amount is \$112,404.

Figure 7 illustrates the income distribution of nonprofits across the Houma-Thibodaux MSA.

Figure 7



Houma-Thibodaux MSA Nonprofit Assets

The majority of Houma-Thibodaux MSA 501c3 nonprofits (82%) operate with assets that fall between the range of \$1 and \$999,999. The total asset amounts range from a minimum of \$1 to a maximum of \$409,488,284. The organization with the largest assets is Thibodaux Regional Health System, Inc, located in Thibodaux, LA. The average asset amount for the Houma-Thibodaux MSA's nonprofits is \$822,324. The median asset amount is \$108,475.

Figure 8 illustrates the asset distribution of nonprofits across the Houma-Thibodaux MSA.

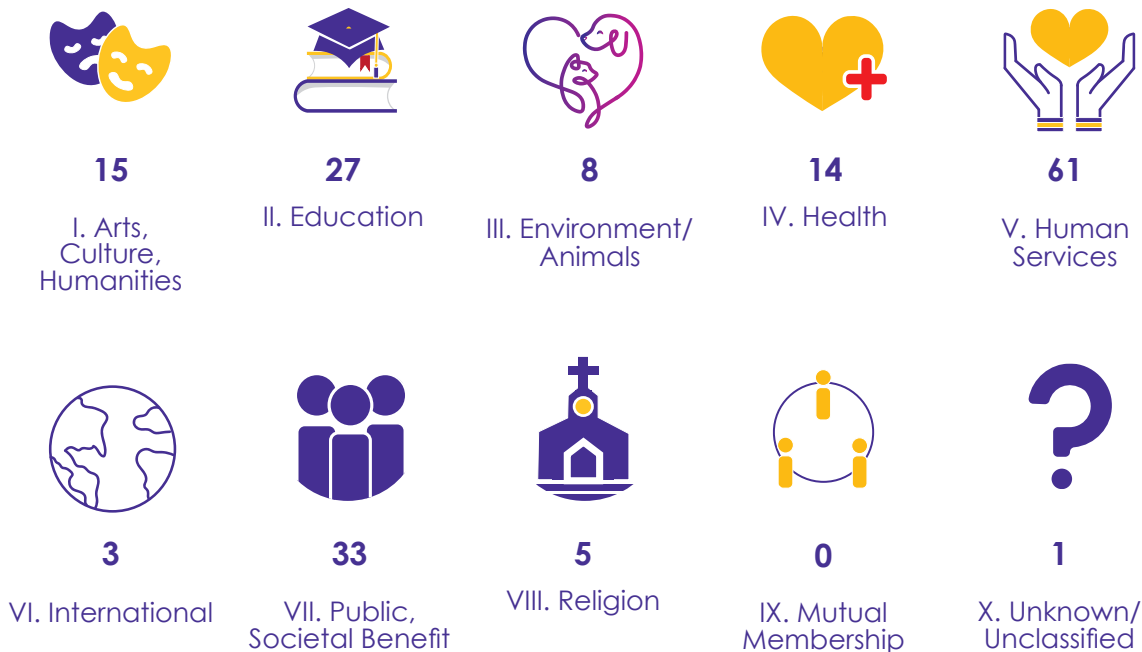
Figure 8

Houma-Thibodaux MSA Asset Distribution



Houma-Thibodaux MSA NTEE Codes

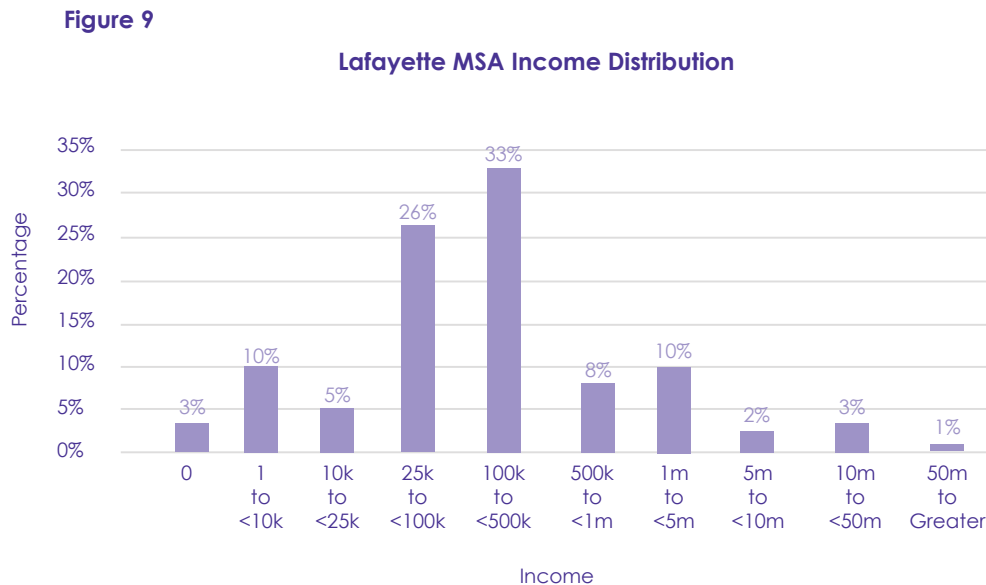
The most common NTEE codes (types of nonprofits) in the Houma-Thibodaux MSA are Human Services (61), Public/Societal Benefit (33), and Education (27). The fewest NTEE codes are Mutual Membership (0) and Unknown/Unclassified (1). The data set had 28 organizations that did not list an NTEE code.



Lafayette MSA Nonprofit Income

Of the 483 501c3 nonprofit organizations in the Lafayette MSA, the majority (74%) operate with an income that falls between the range of \$1 and \$499,999. Their income amounts range from a minimum of \$0 to a maximum of \$148,104,220. The organization with the largest income is Lafayette General Medical Center Inc, located in Lafayette, LA. The average income for the Lafayette MSA's nonprofits is \$417,097. The median income amount is \$125,022.

Figure 9 illustrates the income distribution of nonprofits across the Lafayette MSA.

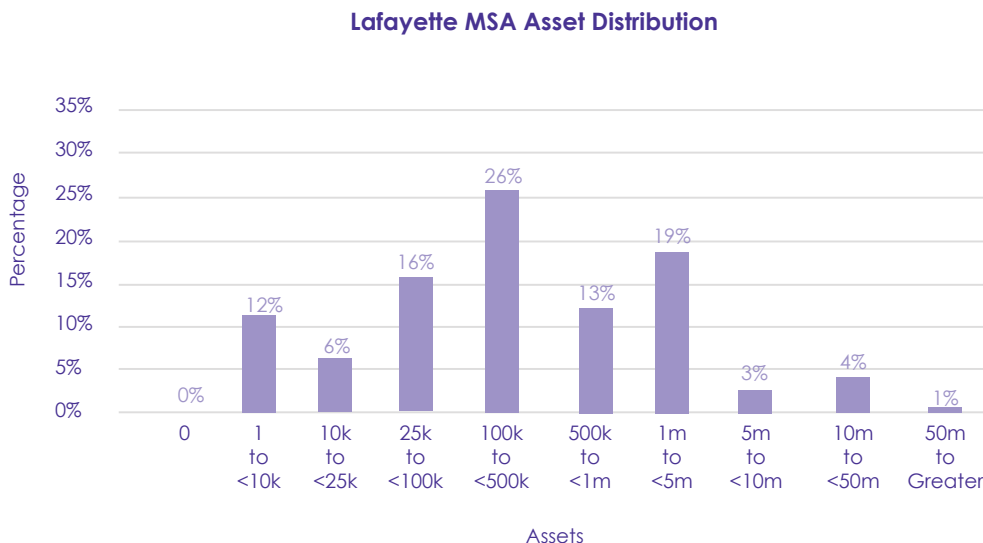


Lafayette MSA Nonprofit Assets

The majority (73%) of the Lafayette MSA 501c3 nonprofits operate with assets that fall between the range of \$1 and \$999,999. The asset amounts for all range from a minimum of \$1 to a maximum of \$1,225,055,095. The organization with the largest assets is Lafayette General Medical Center Inc, located in Lafayette, LA. The average asset amount for the Lafayette MSA's nonprofits is \$829,852. The median asset amount is \$263,301.

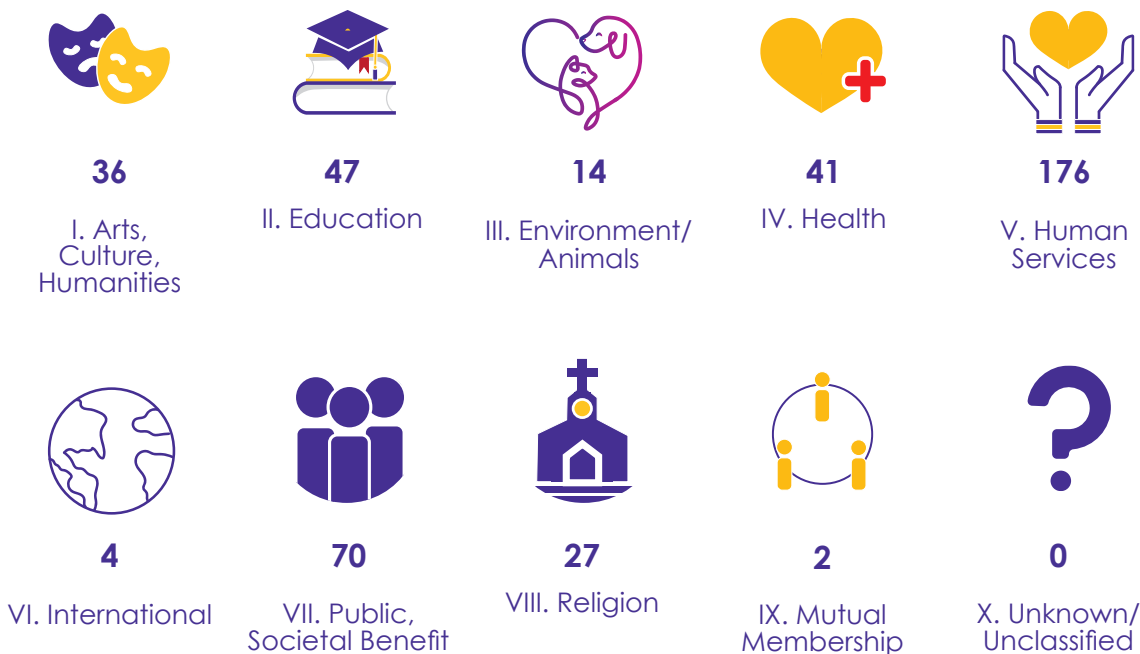
Figure 10 illustrates the asset distribution of nonprofits across the Lafayette MSA.

Figure 10



Lafayette MSA NTEE Codes

The most common NTEE codes (types of nonprofits) in the Lafayette MSA are Human Services (176) and Public/Societal Benefit (70). The fewest NTEE codes are Mutual Membership (2) and Unknown/Unclassified (0). This data set had 66 organizations that did not list an NTEE code.

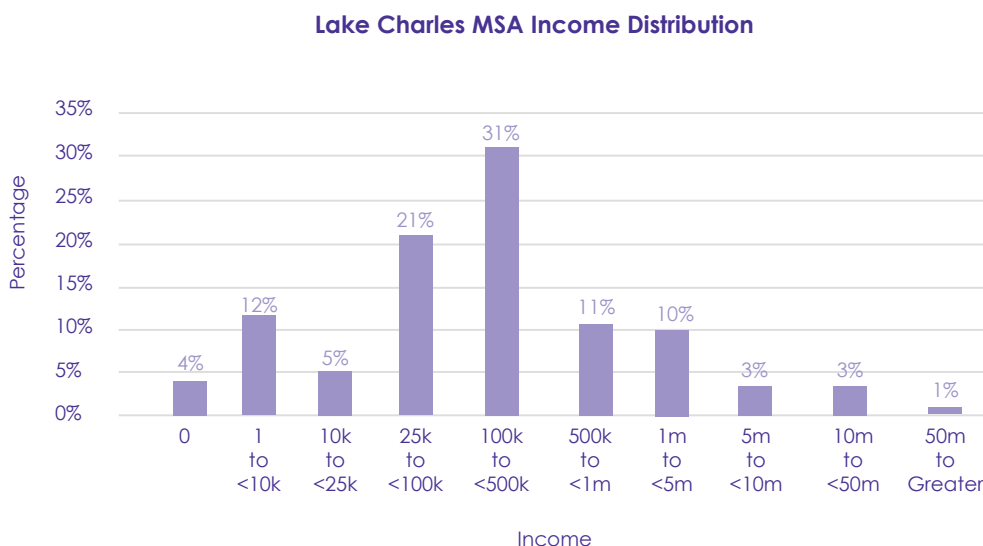


Lake Charles MSA Nonprofit Income

Of the 186 501c3 nonprofit organizations in the Lafayette MSA, the majority (69%) operate with an income that falls between the range of \$1 and \$499,999. Their total income amounts range from a minimum of \$0 to a maximum of \$406,939,424. The organization with the largest income is Southwest Louisiana Hospital Association Inc, located in Lake Charles, LA. The average income for the Lake Charles MSA’s nonprofits is \$522,285. The median income amount is \$147,131.

Figure 11 illustrates the income distribution of nonprofits across the Lake Charles MSA.

Figure 11

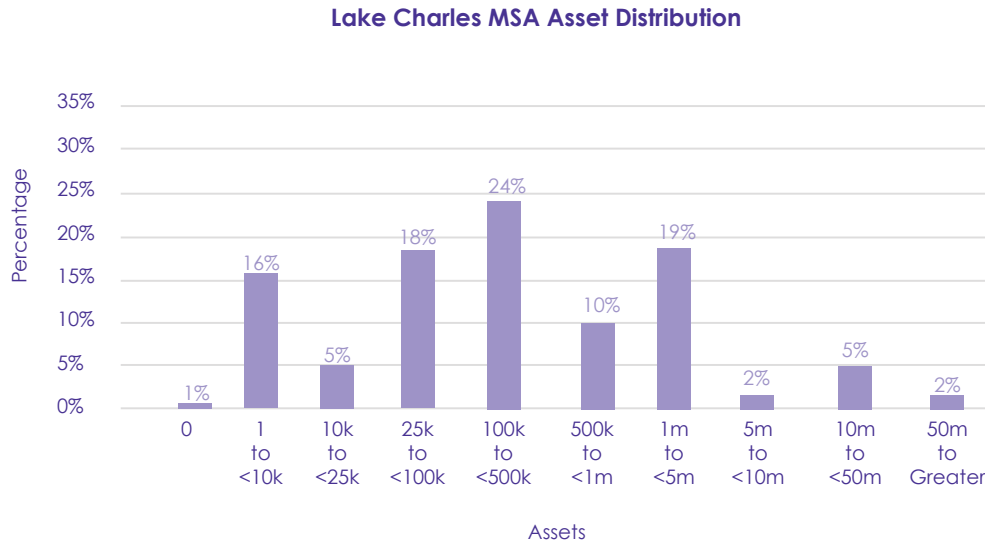


Lake Charles MSA Nonprofit Assets

The majority of Lafayette MSA 501c3 nonprofits (73%) operate with assets that fall between the range of \$1 and \$999,999. The total asset amounts range from a minimum of \$0 to a maximum of \$386,653,359. The organization with the largest assets is Southwest Louisiana Hospital Association Inc, located in Lake Charles, LA. The average asset amount for the Lake Charles MSA’s nonprofits is \$1,100,210. The median asset amount is \$240,805.

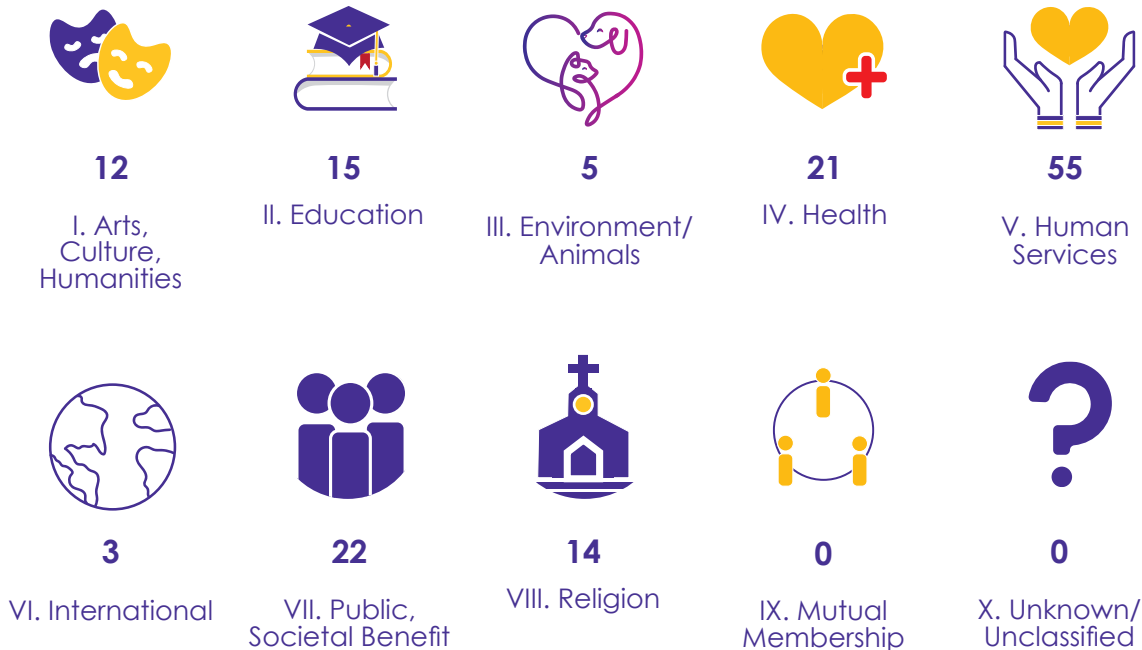
Figure 12 illustrates the asset distribution of nonprofits across the Lafayette MSA.

Figure 12



Lake Charles MSA NTEE Codes

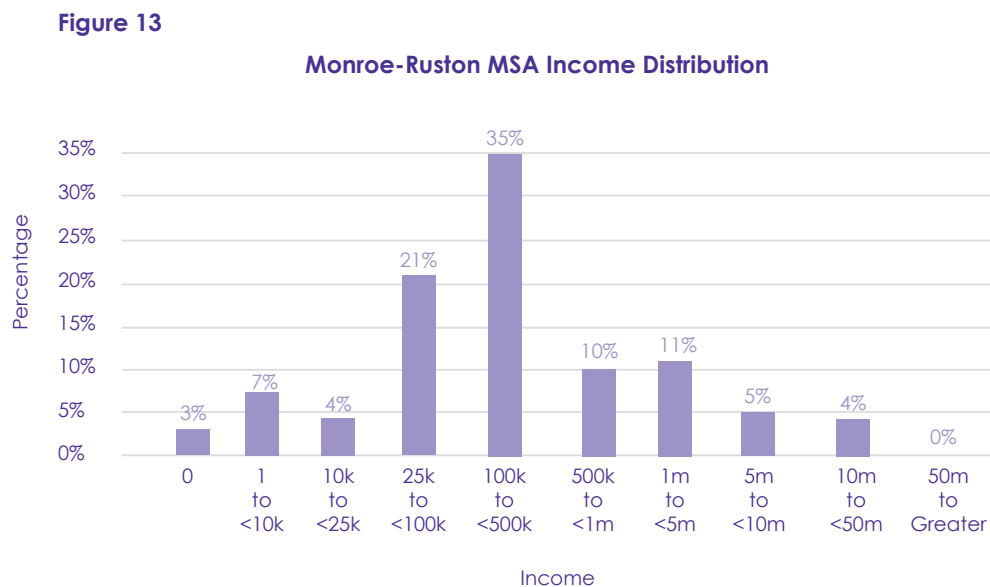
The most common NTEE codes (types of nonprofits) in the Lake Charles MSA are Human Services (55), Public/Societal Benefit (22), and Health (21). The fewest NTEE codes are Mutual Membership (0) and Unknown/Unclassified (0). This data set had 39 organizations that did not list an NTEE code.



Monroe-Ruston MSA Nonprofit Income

Of the 299 501c3 nonprofit organizations in the Monroe-Ruston MSA, the majority (67%) operate with an income that falls between the range of \$1 and \$499,999. Their total income amounts range from a minimum of \$0 to a maximum of \$34,283,848. The organization with the largest income is Louisiana United Methodist Children and Family Services Inc, located in Ruston, LA. The average income for the Monroe-Ruston MSA's nonprofits is \$767,640. The median income amount is \$172,708.

Figure 13 illustrates the income distribution of nonprofits across the Monroe-Ruston MSA.



Monroe-Ruston MSA Nonprofit Assets

The majority of Monroe-Ruston MSA 501c3 nonprofits (71%) operate with assets that fall between the range of \$1 and \$999,999. The total asset amounts range from a minimum of \$0 to a maximum of \$173,397,932. The organization with the largest assets is Innovative Student Facilities Inc, located in Ruston, LA. The average asset amount for the Monroe-Ruston MSA's nonprofits is \$1,065,403. The median asset amount is \$231,284.

Figure 14 illustrates the asset distribution of nonprofits across the Monroe-Ruston MSA.

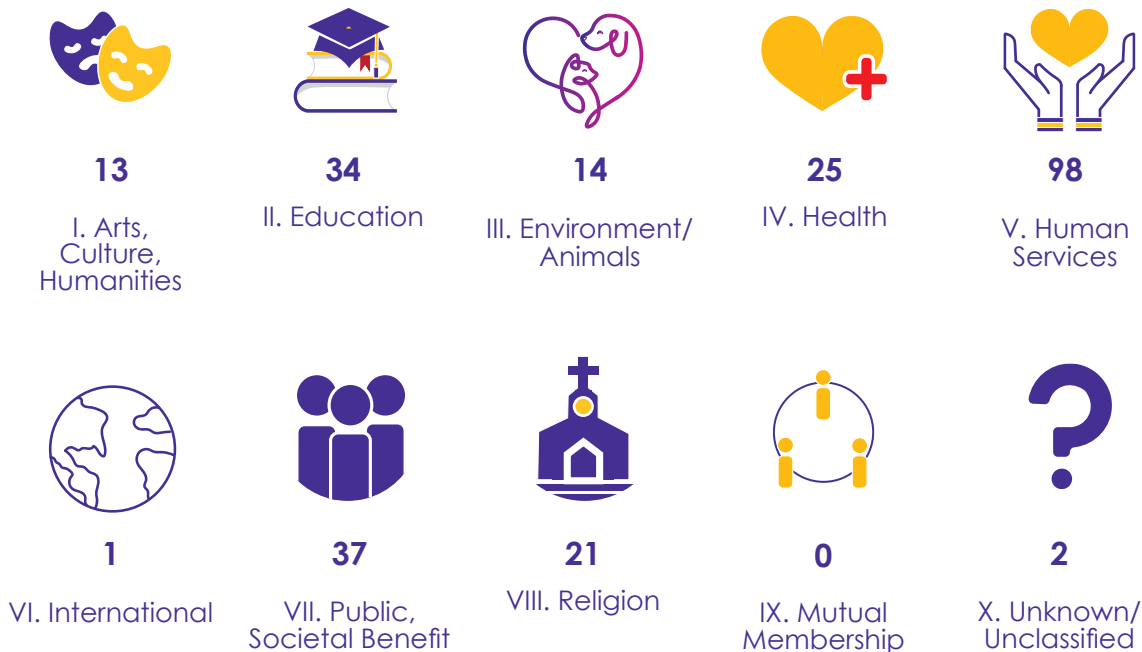
Figure 14

Monroe-Ruston MSA Asset Distribution



Monroe-Ruston MSA NTEE Codes

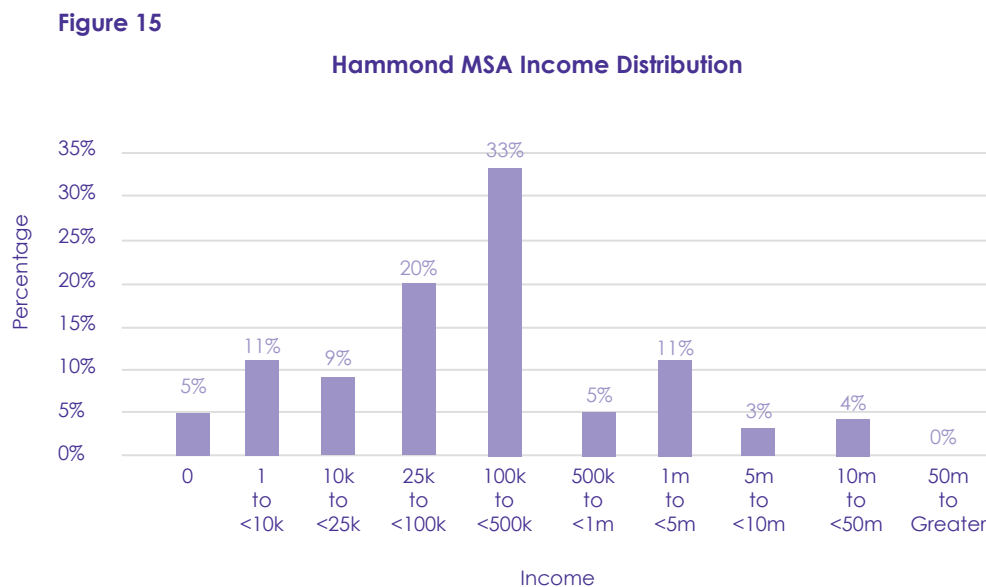
The most common NTEE codes (types of nonprofits) in the Monroe-Ruston MSA are Human Services (98), Public/Societal Benefit (37), and Education (34). The fewest NTEE codes are International (1) and Mutual Membership (0). The data set had 54 organizations that did not list an NTEE code.



Hammond MSA Nonprofit Income

Of the 111 501c3 nonprofit organizations in the Hammond MSA, the majority (73%) operate with an income that falls between the range of \$1 and \$499,999. Their total income amounts range from a minimum of \$0 to a maximum of \$25,654,068. The organization with the largest income is Southeastern Louisiana Area Health Education Center, located in Hammond, LA. The average income for the Hammond MSA's nonprofits is \$567,109. The median income amount is \$131,050.

Figure 15 illustrates the income distribution of nonprofits across the Hammond MSA.

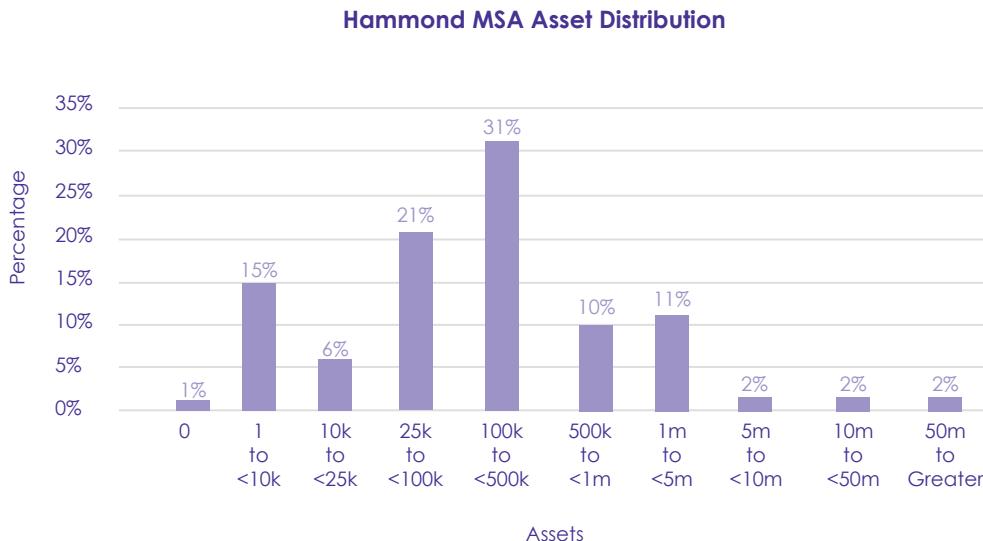


Hammond MSA Nonprofit Assets

The majority of Hammond MSA 501c3 nonprofits (73%) operate with assets that fall between the range of \$1 and \$499,999. The total asset amounts range from a minimum of \$0 to a maximum of \$147,762,953. The organization with the largest assets is University Facilities Inc, located in Hammond, LA. The average asset amount for the Hammond MSA's nonprofits is \$1,449,836. The median asset amount is \$131,105.

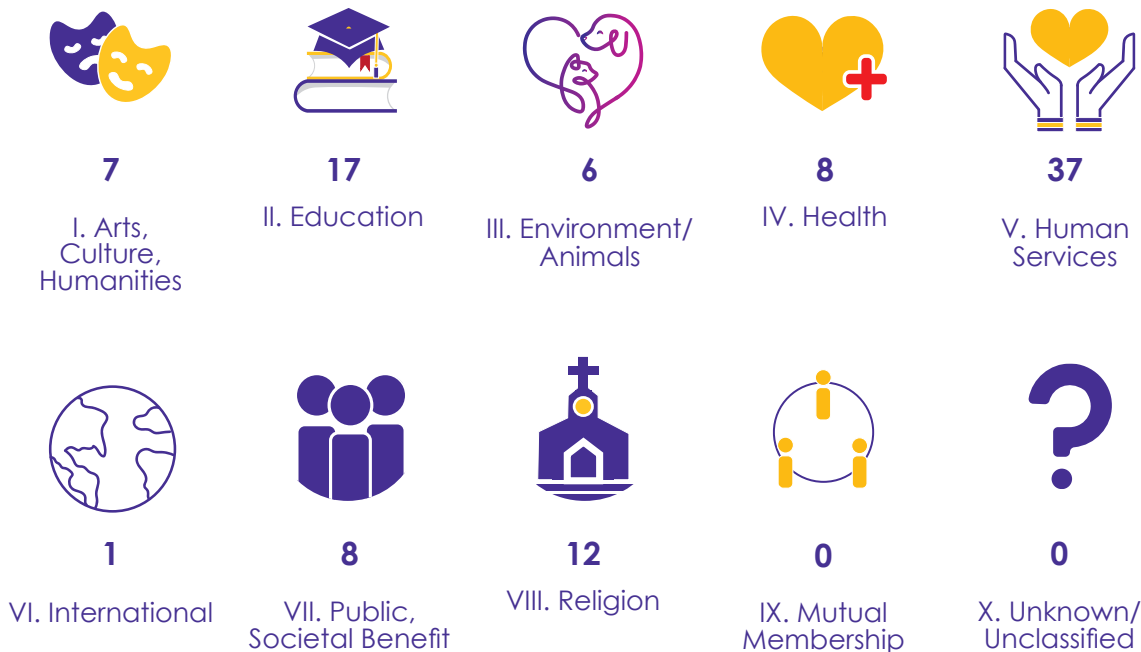
Figure 16 illustrates the asset distribution of nonprofits across the Hammond MSA.

Figure 16



Hammond MSA NTEE Codes

The most common NTEE codes (types of nonprofits) in the Hammond MSA are Human Services (37), Education (17), and Religion (12). The fewest NTEE codes are International (1), Mutual Membership (0), and Unknown/Unclassified (0). The data set had 15 organizations that did not list an NTEE code.

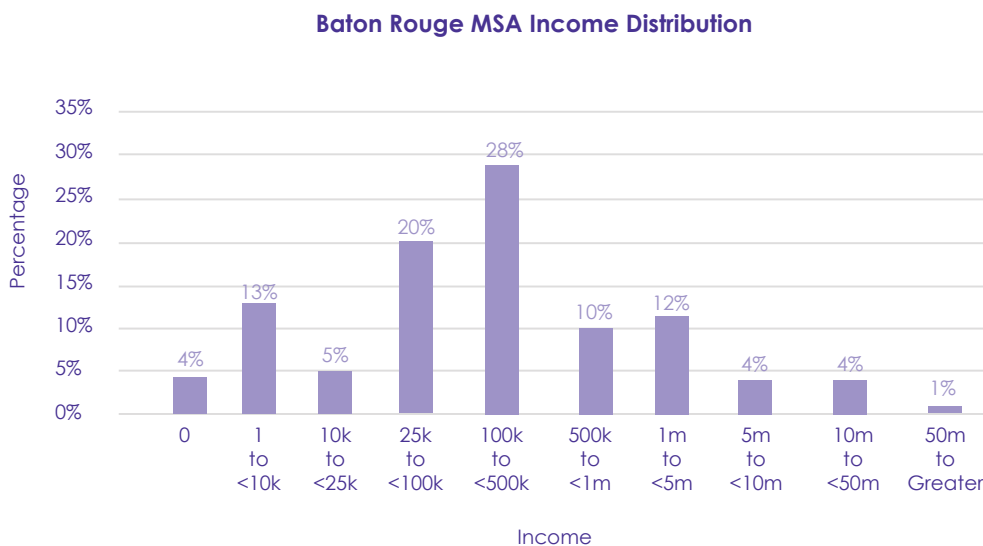


Baton Rouge MSA Nonprofit Income

Of the 962 501c3 nonprofit organizations in the Baton Rouge MSA, the majority (66%) operate with an income that falls between the range of \$1 and \$499,999. Their total income amounts range from a minimum of \$0 to a maximum of \$1,577,907,798. The organization with the largest income is Our Lady of the Lake Hospital Inc, located in Baton Rouge, LA. The average income for the Baton Rouge MSA's nonprofits is \$746,503. The median income amount is \$149,963.

Figure 17 illustrates the income distribution of nonprofits across the Baton Rouge MSA.

Figure 17



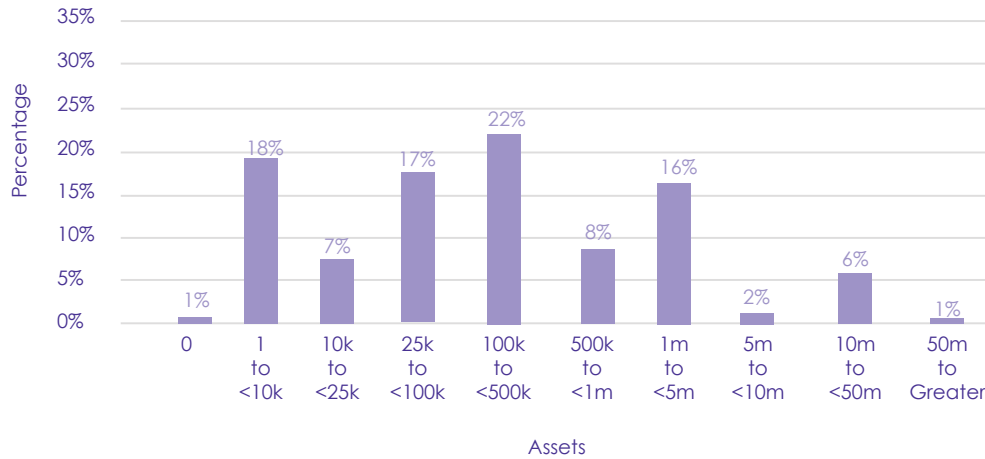
Baton Rouge MSA Nonprofit Assets

The majority of Baton Rouge MSA nonprofits (72%) operate with assets that fall between the range of \$1 and \$999,999. The total asset amounts range from a minimum of \$0 to a maximum of \$2,441,820,013. The organization with the largest assets is Our Lady of the Lake Hospital Inc, located in Baton Rouge, LA. The average asset amount for the Baton Rouge MSA's nonprofits is \$1,234,300. The median asset amount is \$171,998.

Figure 18 illustrates the asset distribution of nonprofits across the Baton Rouge MSA.

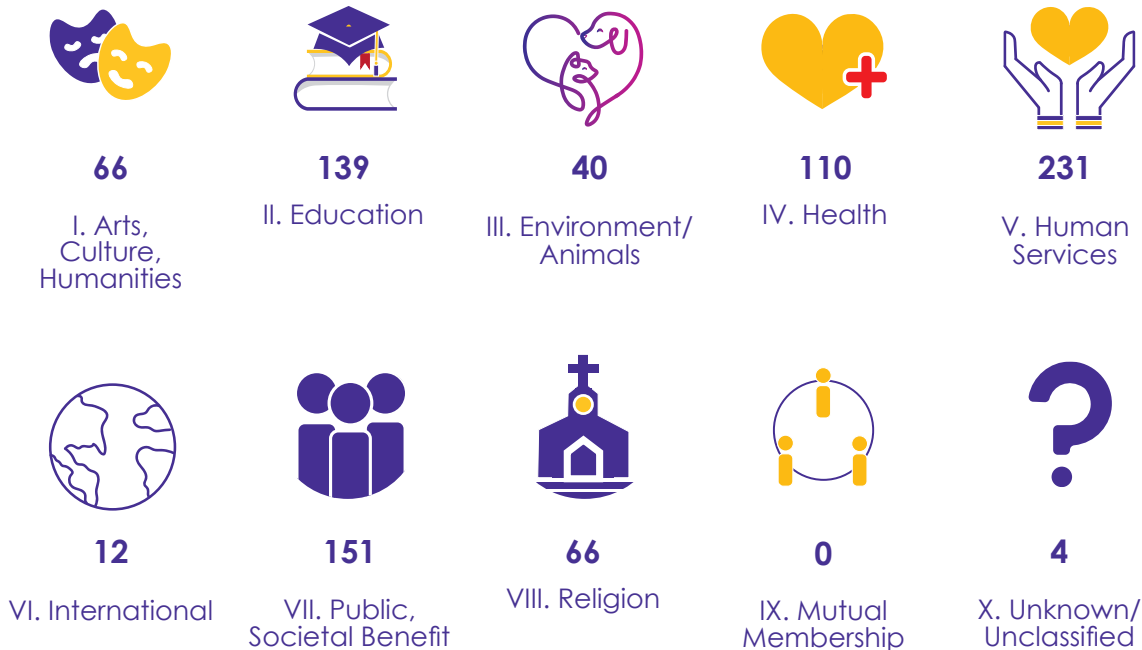
Figure 18

Baton Rouge MSA Asset Distribution



Baton Rouge MSA NTEE Codes

The most common NTEE codes (types of nonprofits) in the Baton Rouge MSA are Human Services (231), Public/Societal Benefit (151), and Education (139). The fewest NTEE codes are Mutual Membership (0) and Unknown/Unclassified (4). The data set had 143 organizations that did not list an NTEE code.

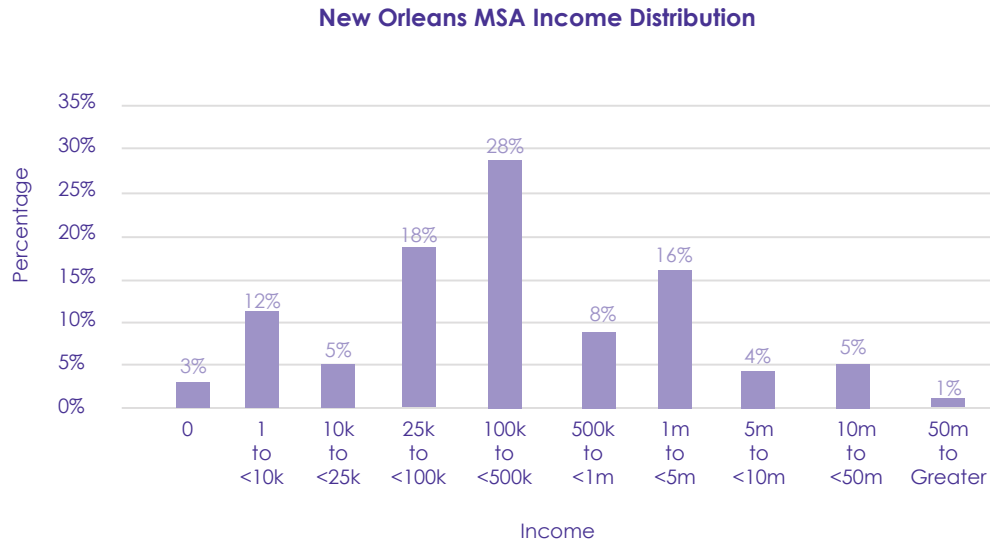


New Orleans MSA Nonprofit Income

Of the 1,994 501c3 nonprofit organizations in the New Orleans MSA, the majority (63%) operate with an income that falls between the range of \$1 and \$499,999. Their total income amounts range from a minimum of \$0 to a maximum of \$4,114,959,884. The organization with the largest income is Ochsner Clinic Foundation, located in New Orleans, LA. The average income for the New Orleans MSA's nonprofits is \$1,033,241. The median income amount is \$202,195.

Figure 19 illustrates the income distribution of nonprofits across the New Orleans MSA.

Figure 19

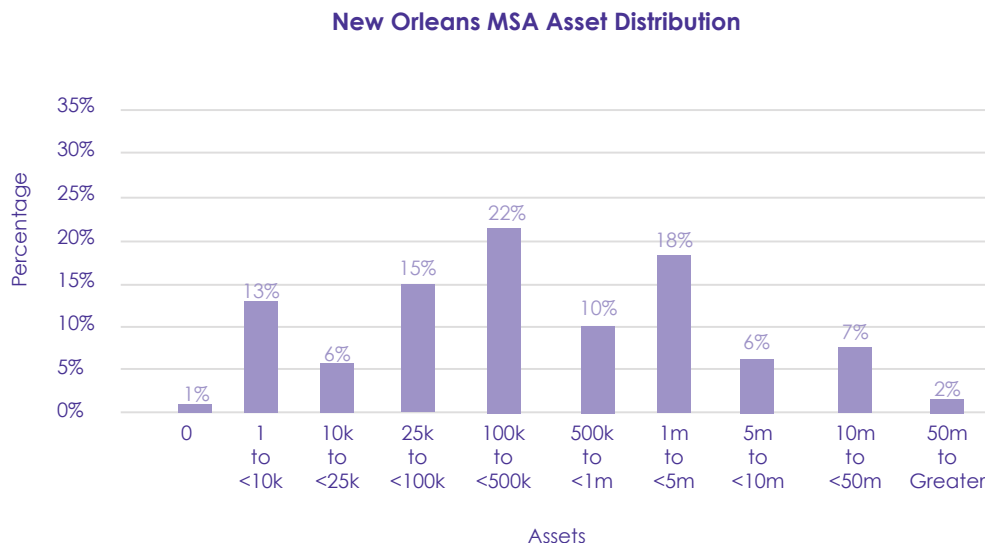


New Orleans MSA Nonprofit Assets

The majority of New Orleans MSA nonprofits (66%) operate with assets that fall between the range of \$1 and \$999,999. The total asset amounts range from a minimum of \$0 to a maximum of \$3,490,558,630. The organization with the largest assets is Ochsner Clinic Foundation, located in New Orleans, LA. The average asset amount for the New Orleans MSA's nonprofits is \$1,820,638. The median asset amount is \$300,522.

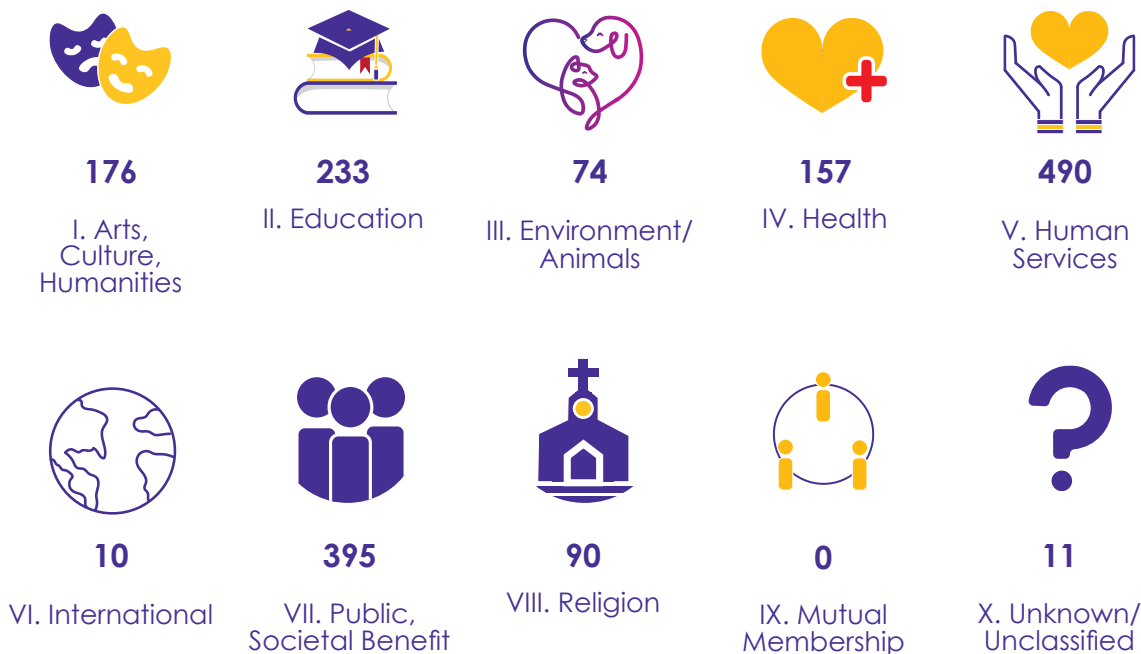
Figure 20 illustrates the asset distribution of nonprofits across the New Orleans MSA.

Figure 20



New Orleans MSA NTEE Codes

The most common NTEE codes (types of nonprofits) in the New Orleans MSA are Human Services (490), Public/Societal Benefit (395), and Education (233). The fewest NTEE codes are International (10) and Mutual Membership (0). The data set had 358 organizations that did not list an NTEE code.



Economic Summary

Nonprofits across the state make a significant economic contribution by generating \$25 billion in income annually, with the largest nonprofits being Health Care nonprofits. Most nonprofits in our state are small and generate less than \$500,000 in annual revenues. Although nonprofit asset sizes are larger than their income, most nonprofits in the state have less than \$999,000 in assets. The most common nonprofits in the state are Human Service organizations, followed by Public and Societal Benefit and Education.

Economic data comparisons across the nine MSAs are similar. The MSAs with larger populations have 501c3 nonprofits that operate with larger average income and assets. However, Monroe-Ruston MSA is an outlier in the data. Monroe MSA had a larger average nonprofit income (\$767,640) than Houma (\$388,749) and Baton Rouge MSA (\$746,503).

In addition, the organization with the most income in the Monroe MSA is a Human Service organization, which is different than the rest of the MSAs where the largest nonprofits are Health Care organizations. Houma MSA has a larger percentage of nonprofits with assets less than \$999,000 (82%), and Lafayette MSA has a larger percentage of nonprofits with income less than \$500,000 (74%).

Louisiana Workforce Data

The 2017 workforce numbers indicated that nonprofit employees made up 8.2% of the overall Louisiana workforce, which are approximately 130,468 employees in 2,993 nonprofits across the state. This report includes nonprofit employment in the following industries as defined by the Bureau of Labor Statistics:

- Retail Trade
- Real Estate and Rental and Leasing
- Professional, Scientific, and Technical Services
- Management of Companies and Enterprises
- Administrative and Support and Waste Management and Remediation Services
- Educational Services
- Health Care and Social Assistance
- Arts, Entertainment, and Recreation
- Other Services (except Public Administration)

The report also details nonprofit employment within certain industries.

Health Care and Social Assistance

- Ambulatory Health Care Services
- Hospitals
- Nursing and Residential Care Facilities
- Social Assistance

Arts, Entertainment and Recreation

- Performing Arts, Spectator Sports, and Related Industries
- Museums, Historical Sites, and Similar Institutions
- Amusement, Gambling, and Recreation Industries

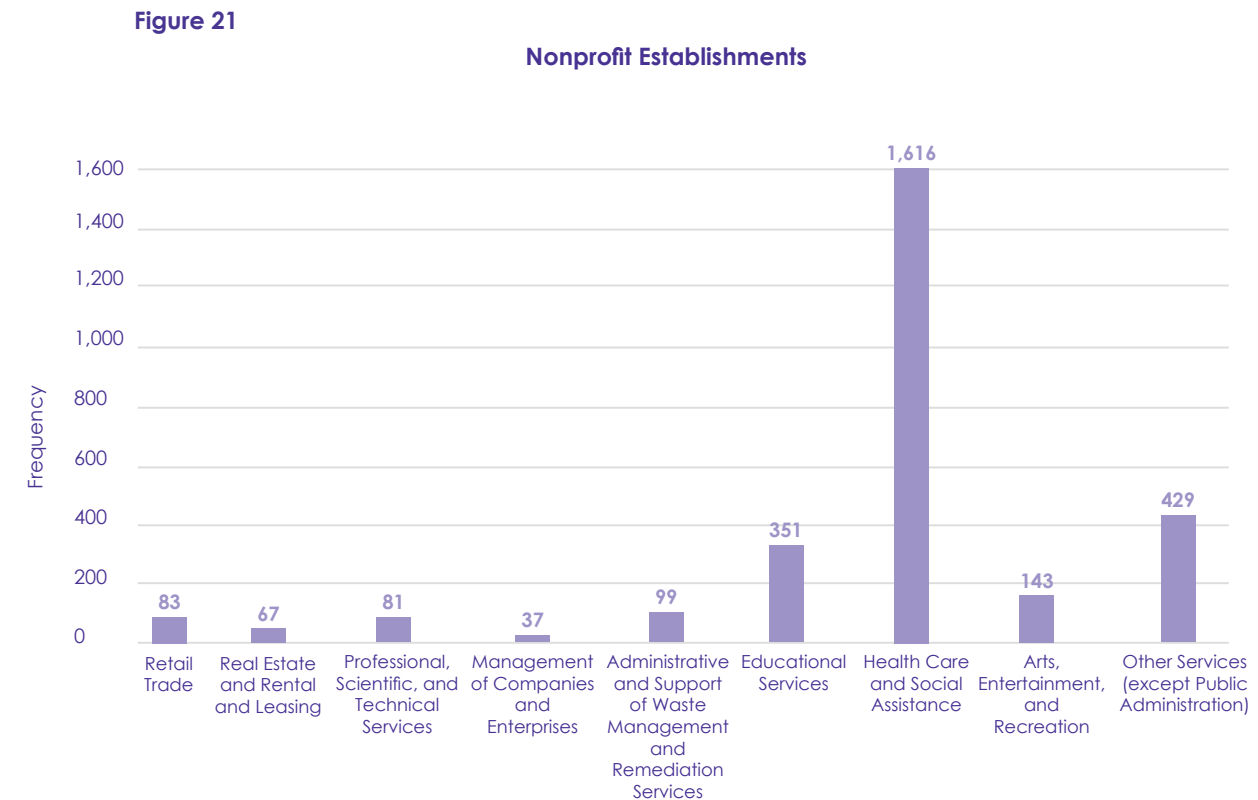
Other Services

- Grantmaking and Giving Services
- Social Advocacy Organizations
- Civic and Social Organizations

The report shows the average number of nonprofit establishments, average number of nonprofit employees, percent of nonprofit employment per industry and average annual wages per employee.

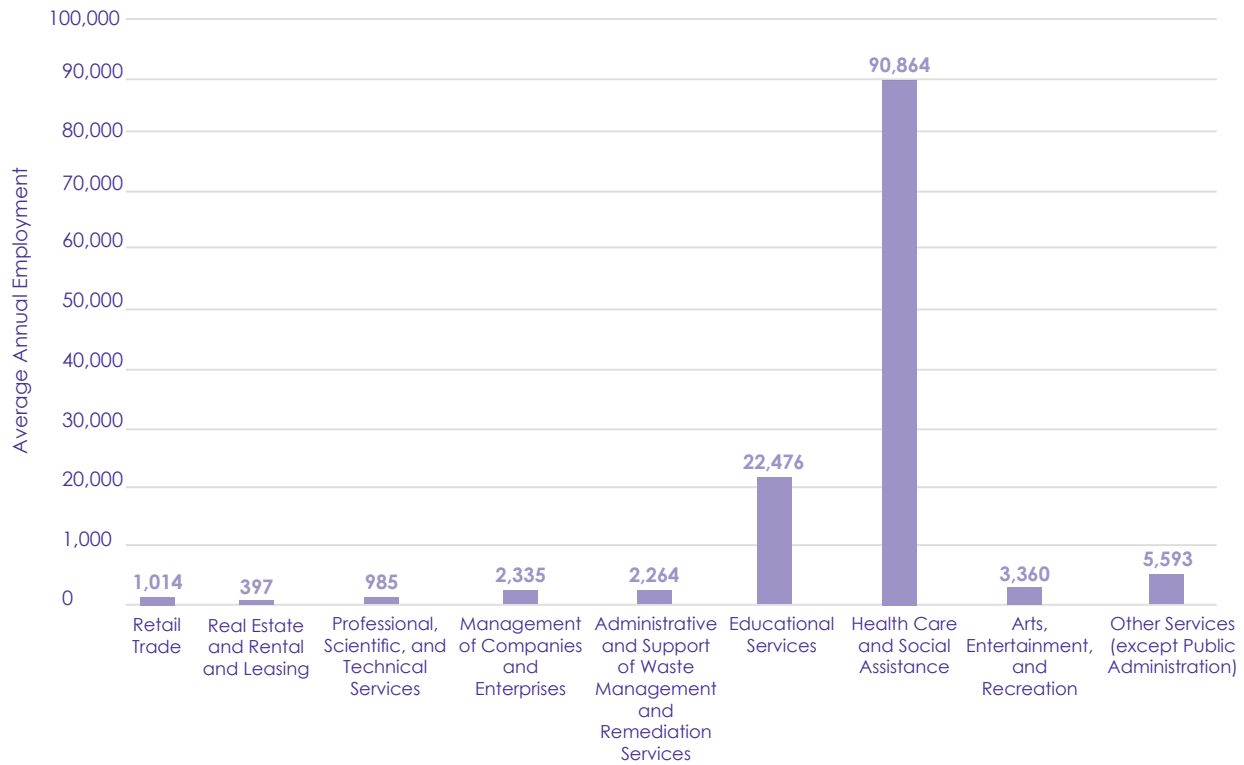
Number of Nonprofit Establishments and Average Number of Nonprofit Employees

As shown in Figure 21, the majority of nonprofit establishments with employees are in Health Care and Social Services, Other Services, which includes Grantmaking organizations, Social Advocacy Organizations, and Civic and Social Organizations.



As shown in Figure 22, similar to the number of nonprofit establishments in certain industries, the highest number of nonprofit employees are within the Health Care and Social Assistance, Educational Services and Other Services industries.

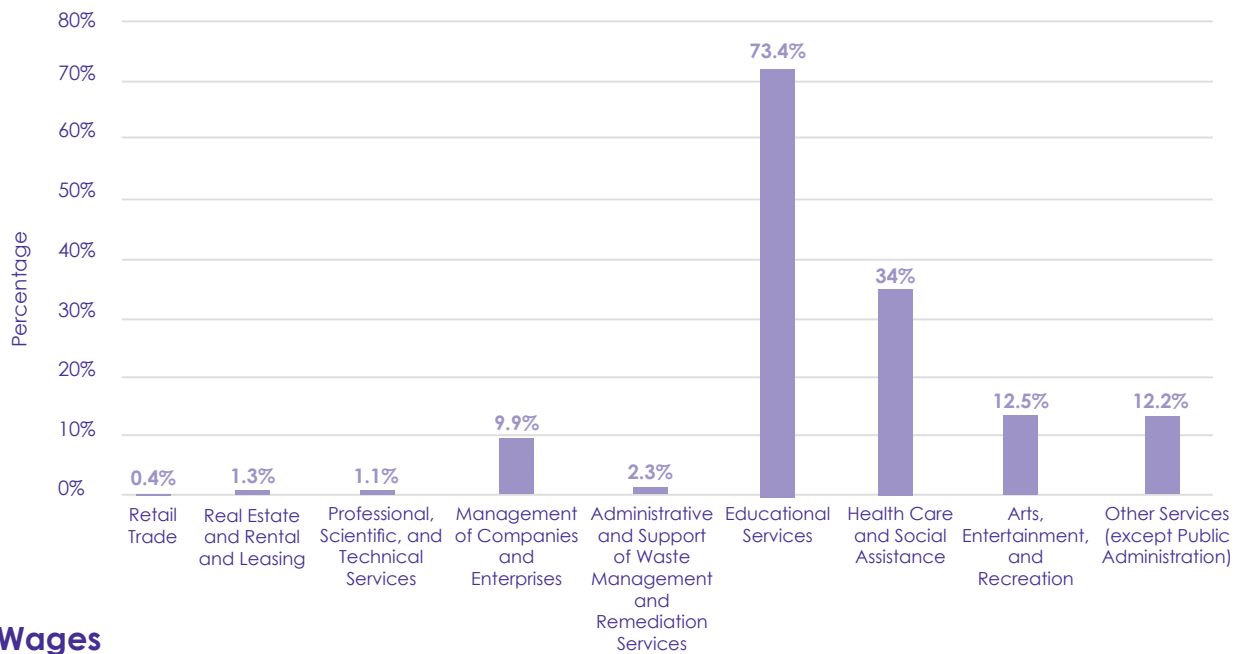
Figure 22 **Average Annual Employment**



Percent Nonprofit Employment

When comparing the number of nonprofit employees as a proportion of the private sector workforce, nonprofit employees make up 73.4% of the employees in the Educational Services industry, and 34% of the employees within the Health Care and Social Services industry as shown in figure 23.

Figure 23 Percent Employment 501(c)(3)



Wages

When looking at average annual wages, nonprofit employees make more money than for-profit employees in several industries such as Health Care and Social Assistance and Educational Services.

Figure 24 Average Annual Wages

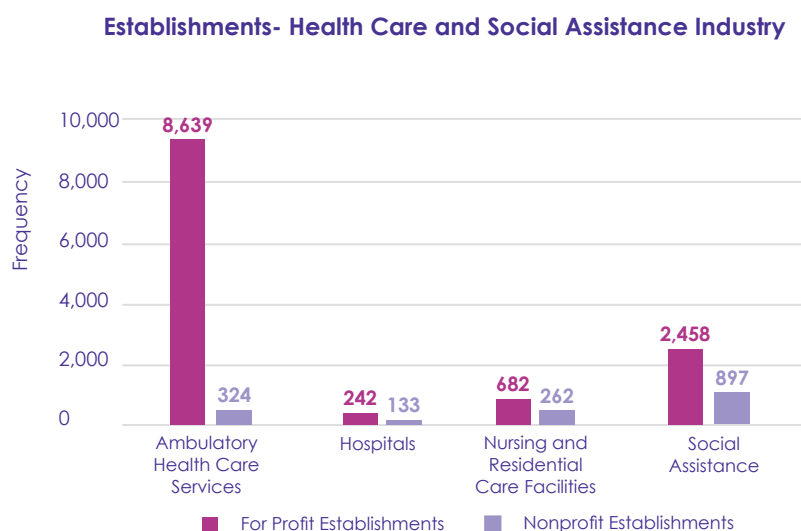


Workforce Data by Industry

Health Care and Social Assistance

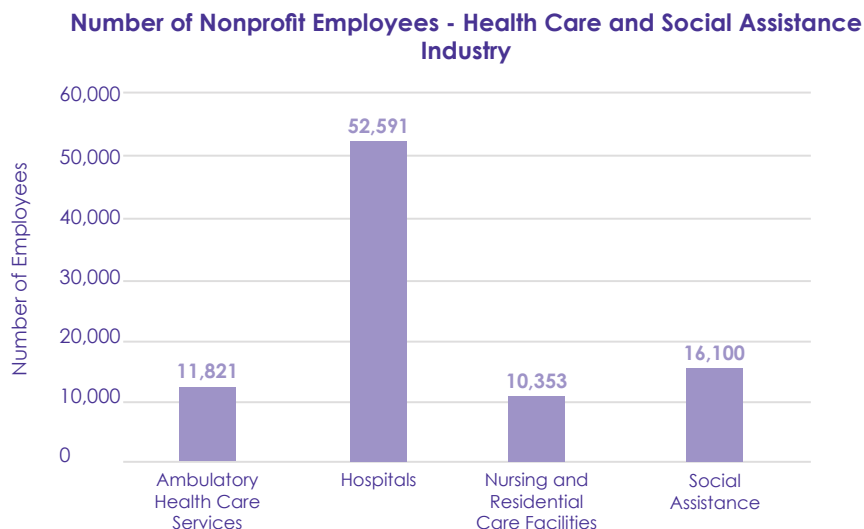
Within the Health Care and Social Services industry, there were four subsectors where nonprofits are employed, them being, Ambulatory Health Care Services, Hospitals, Nursing and Residential Care Facilities, and Social Assistance. Figure 25 shows the number of nonprofit organizations within these industry subsectors.

Figure 25



In addition, figure 26 shows the number of nonprofit employees within the Health Care and Social Assistance Industry, with Hospitals (52,591) having the most nonprofit employees within this Industry subsector.

Figure 26



Similarly, figure 27 shows the percent of 501c3 employment within the Health Care and Social Assistance Industry subsectors. Nonprofit employees make up 68.6% of the Hospitals subsector.

Figure 27

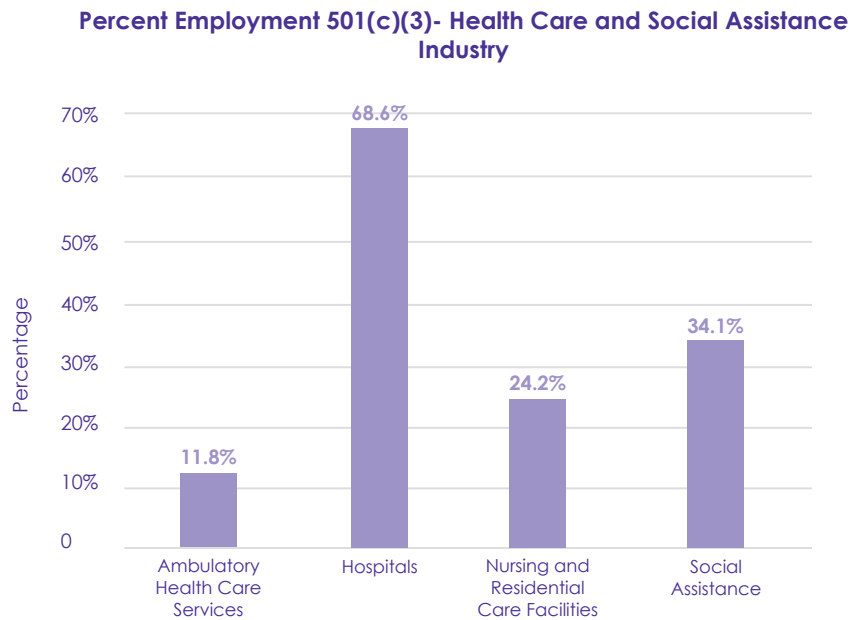
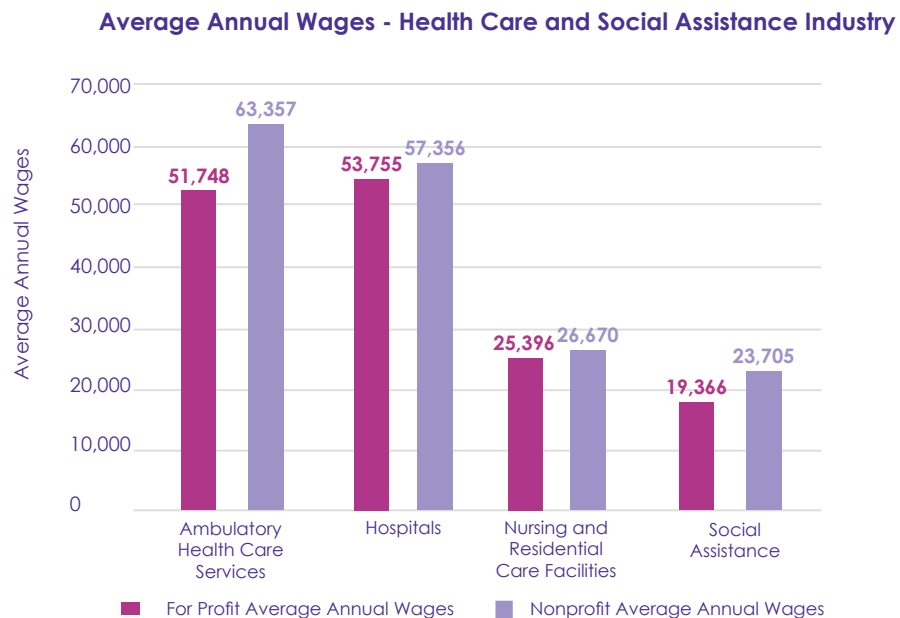


Figure 28 shows average annual wages of nonprofit employees in the Health Care and Social Assistance industry. Nonprofit employees make slightly more average annual compensation in all four industry subsectors.

Figure 28



Arts, Entertainment, and Recreation

Within the Arts Entertainment, and Recreation Industry, figure 29 shows there are a similar number of nonprofit and for-profit establishments in the Museum subsector; however, there are far more for-profit establishments in the Performing Arts and Amusements subsectors than nonprofit establishments.

Figure 29

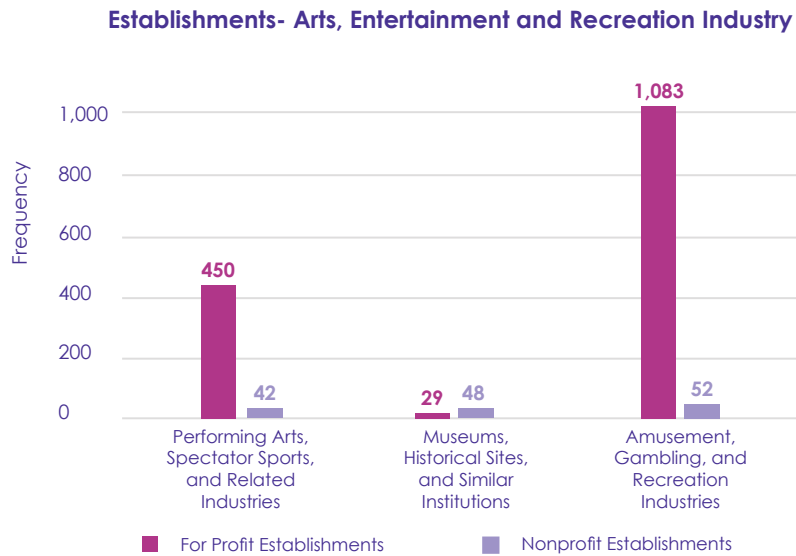
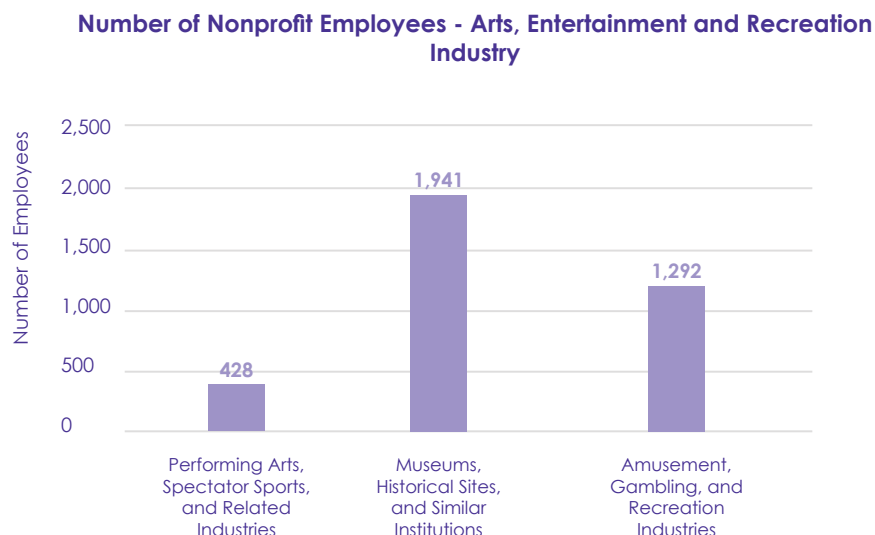


Figure 30 shows the number of nonprofit employees within the Arts, Entertainment and Recreation Industry subsector. Museums, Historical Sites, and Similar Institutions employ the most nonprofit individuals.

Figure 30



Similarly, as shown in figure 31, nonprofit workers make up 86% of the Museums, Historical Sites and Similar Institutions workforce.

Figure 31

Percent Employment 501(c)(3)- Arts, Entertainment and Recreation Industry

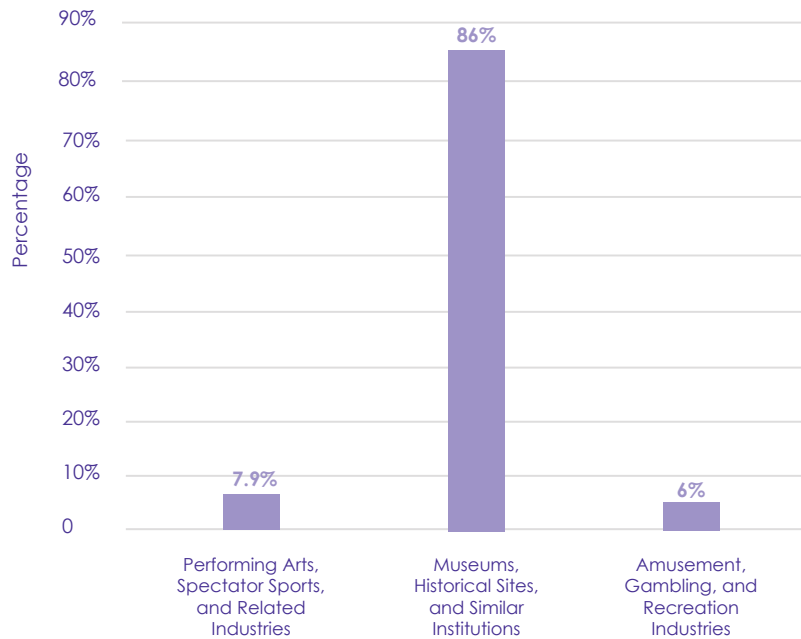
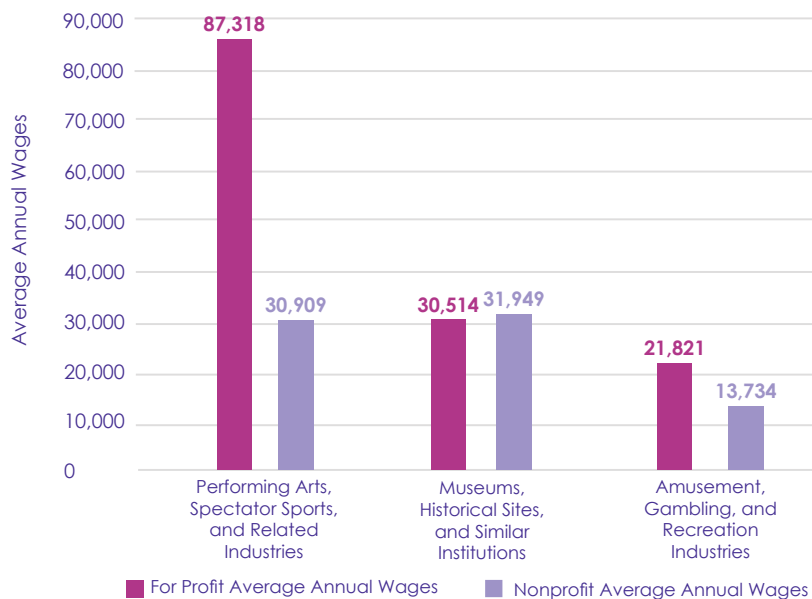


Figure 32 shows average annual wages in the Arts, Entertainment and Recreation Industry Subsector. While for-profit employees make more in the Performing Arts, Amusement Industry Subsector, nonprofit employees make slightly more in the Museum, Historical Sites, and Similar Institutions Subsector.

Figure 32

Average Annual Wages - Arts, Entertainment and Recreation Industry



Other Services

The other services industry covers several different subsectors, however, nonprofit employment is centered around the Religious, Grantmaking, Civic, Professional, and Similar Organizations subsector, which is made up of Grantmaking and Giving Services, Social Advocacy Organizations and Civic and Social Organizations subgroups. Out of this industry, Social Advocacy Organizations group has the most nonprofit agencies (as shown in figure 33) and the most nonprofit employees as shown in figure 34.

Figure 33

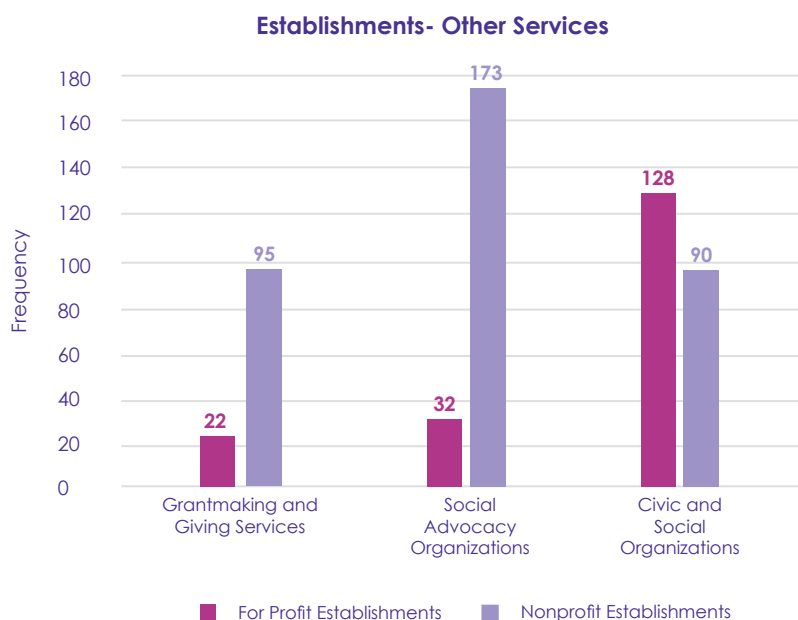
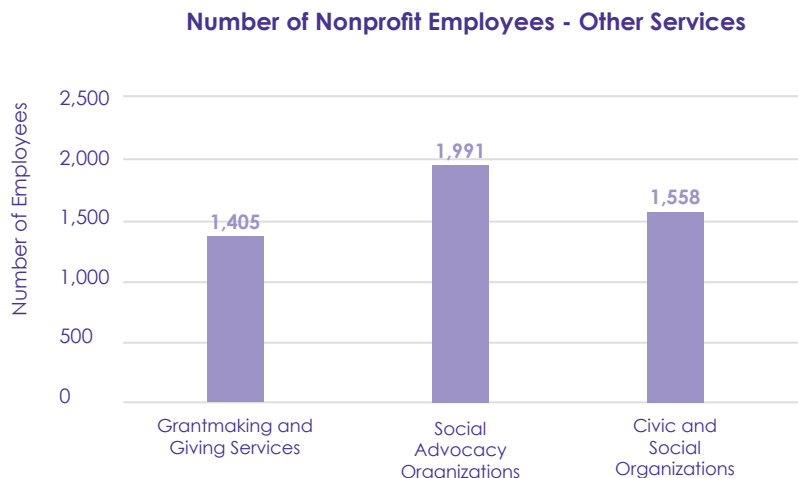
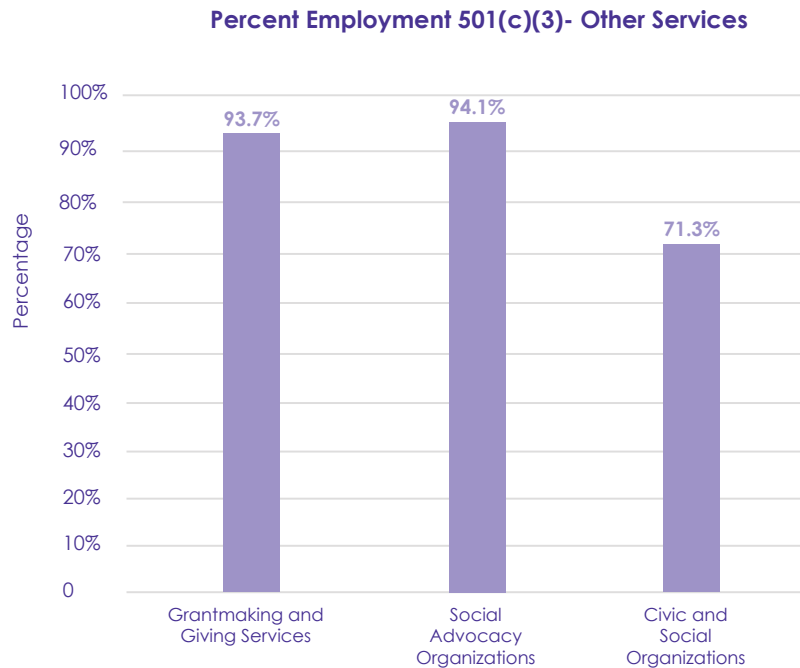


Figure 34



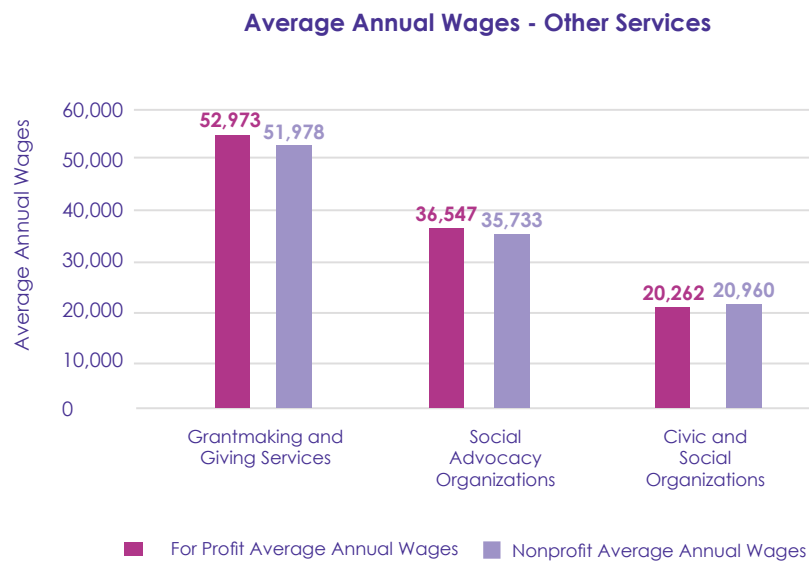
Nonprofit workers make up the majority of employment in the entire subsector of Religious, Grantmaking, Civic, Professional, and Similar Organizations as shown in figure 35.

Figure 35



Nonprofit employees make slightly more average annual wages in the Social Advocacy Organizations group and the Civic and Social Organizations group than their for-profit counterparts as shown in figure 36.

Figure 36



Workforce Summary Findings

Nonprofits remain a strong part of the workforce, comprising 8% of the state's workforce. Nonprofit employees are most prevalent in the Health Care and Social Assistance industries making up 73.4% of the workforce. Nonprofit employees make comparable wages in most industries and make more on average than their for-profit counterparts in Administrative and Support and Waste Management and Remediation Services; Educational Services; and the Health Care and Social Assistance Industries.

Looking further into each industry, the most nonprofit employees are within Hospitals, where nonprofit workers comprise 68% of the workforce. Nonprofit employees make slightly more on average in the Health Care and Social Assistance Industry subsectors. Within the Arts, Entertainment and Recreation Industry, nonprofit workers make up 86% of the Museums, Historical Sites, and Similar Institutions and make slightly more annual wages than those employed in for-profit organizations. Lastly, nonprofit workers and establishments are the most prevalent in the Religious, Grantmaking, Civic, Professional, and Similar Organizations subsector, within the Other Services industries. Within this subsector, nonprofit workers make up 93.7% of the Grantmaking and Giving Services workforce and 94.1% of the Social Advocacy Organizations workforce. Moreover, Nonprofit employees' annual average wages are slightly higher in Social Advocacy Organizations and Civic and Social Organizations than those employees in for-profit organizations.

Appendix A: MSA Map References

Figure 37 is 2013 Louisiana state map that outlines the Metropolitan Statistical Areas, while Figure 38 is 2020 version of the same map. Both maps were used in this report to determine MSA jurisdiction.

Figure 37

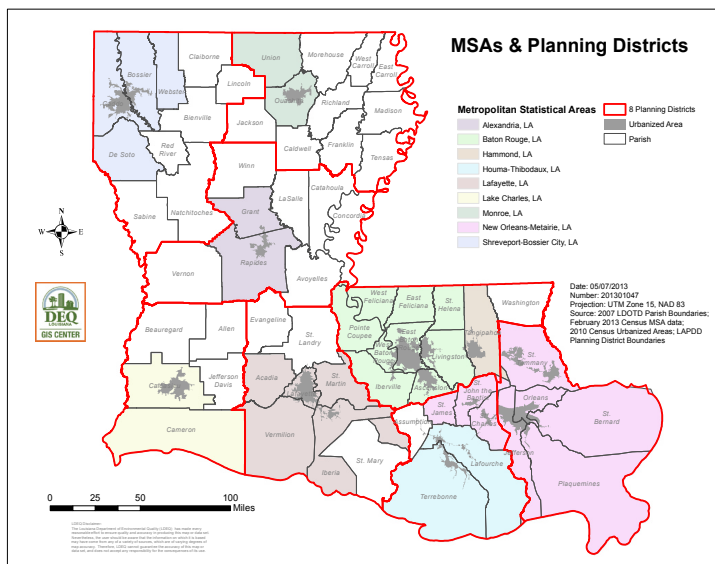
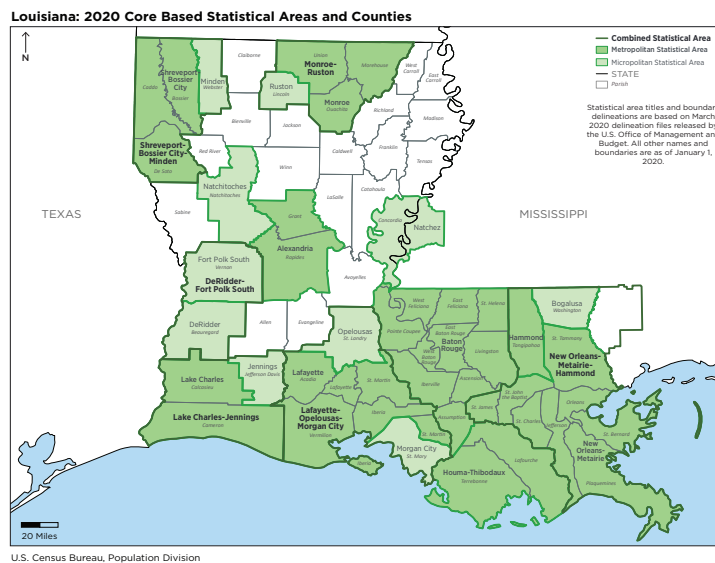


Figure 38



Appendix B: Economic Summary Table

Figure 38

	State	Shreveport-Bossier MSA	Monroe-Ruston MSA	Alexandria MSA	Baton Rouge MSA	New Orleans MSA	Houma-Thibodaux MSA	Lake Charles MSA	Lafayette MSA	Hammond MSA
Number	5,331	519	299	176	962	1,994	195	186	483	111
1 to 499,999	67%	69%	67%	65%	66%	63%	75%	69%	74%	73%
Largest Income	\$4,114,959,884	\$793,255,516	\$34,283,848	\$308,807,114	\$1,577,907,798	\$4,115,959,884	\$272,489,003	\$406,939,424	\$148,104,220	\$25,654,068
Average Income	\$727,657	\$576,438	\$767,640	\$609,075	\$746,503	\$1,033,241	\$388,749	\$522,285	\$417,097	\$567,109
Median Income	\$155,068	\$135,273	\$172,708	\$161,866	\$149,963	\$202,195	\$112,404	\$147,131	\$125,022	\$131,050
1 to 999,999	70%	75%	71%	69%	72%	66%	82%	73%	73%	73%
Largest Asset	\$3,490,558,630	\$334,299,199	\$173,397,932	\$331,600,505	\$2,441,820,013	\$3,490,558,630	\$409,488,284	\$386,653,359	\$1,225,055,095	\$147,762,953
Average Asset	\$1,249,361	\$1,087,122	\$1,065,403	\$1,044,028	\$1,234,300	\$1,820,638	\$822,324	\$1,100,210	\$829,852	\$1,449,836
Median Asset	\$233,687	\$218,543	\$231,284	\$265,825	\$171,998	\$300,522	\$108,475	\$240,805	\$263,301	\$131,105
Largest NTEE Code	HS, Education, Public	HS, Public, Education	HS, Public, Education	HS, Education, Arts Culture	HS, Public, Education	HS, Public, Education	HS, Public, Education	HS, Public, Health	HS, Public, Education	HS, Education, Religion
Smallest NTEE Code	Unknown, Membership	Int'l, Mutual, Unknown	Int'l, Mutual	Int'l, Mutual, Unknown	Mutual, Unknown	Int'l, Mutual	Mutual, Unknown	Unknown, Mutual	Mutual, Unknown	Mutual, Unknown
Largest Organization Income	Ochsner Clinic Foundation	Ochsner LSU Health System of North Louisiana	Louisiana United Methodist Children and Family Services Inc	Christus Health Central Louisiana	Our Lady of the Lake Hospital Inc	Ochsner Clinic Foundation	Thibodaux Regional Health System, Inc	Southwest Louisiana Hospital Association Inc	Lafayette General Medical Center Inc	Southeastern Louisiana Area Health Education Center

Appendix C: Economic Indicators Table

Figure 38

MSA	Population	% in Poverty*	% Unemployment**	Personal Income Per Capita
State	4,651,203	18.6%	3.5%	\$50,810
Shreveport-Bossier	392,525	20.9%	3.5%	\$52,391
Alexandria	151,736	18.4%	2.6%	\$47,961
Houma-Thibodaux	206,814	18.1%	3.3%	\$47,259
Lafayette	478,077	18.5%	3.1%	\$47,553
Lake Charles	222,035	16.5%	3.4%	\$50,935
Monroe-Ruston	206,557	23.5%	3.3%	\$45,252
Hammond	133,549	20.2%	4.3%	\$41,972
Baton Rouge	870,178	15.3%	3.1%	\$52,978
New Orleans	1,270,366	16.9%	4.1%	\$57,891
Source	2020 Population & Housing Estimates US Census Bureau	2020 American Community Survey 5 Year Estimates	Bureau of Labor Statistics (BLS) - April 2022	2020 Bureau of Economic Analysis - Personal Income Summary

*2020 national average 11.4%

**2022 April national average 3.6%